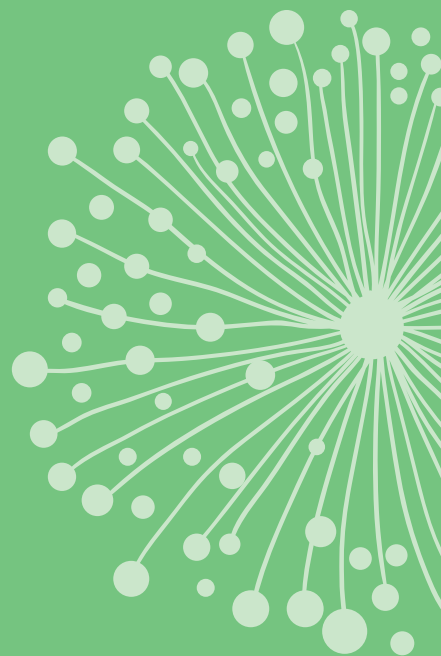




The Terrace

The Terrace is an exclusive collection of homes within the Highgrove community that have been designed to have striking curb appeal. The collection boasts architecturally inspired facades that incorporate a mix of dark stained timber and light coloured render to create a bold, contemporary look. The internal floorplans are smart and functional. Each home offers stylish open plan living downstairs as well as a bedroom with an adjacent powder room, perfect for visitors.

Three spacious bedrooms are located on the first floor with the master suite including a large walk in robe and ensuite. Car accommodation is at the rear of the property with the front of the homes featuring lush landscaped gardens. Designed by the award winning Sienna Homes, these homes have been created with space and light in mind to ensure they are both stylish and practical. Sienna Homes have forged a reputation for quality homes that provide genuine value for money.



Designed For Life

4 BEDROOMS +
2 LIVING AREAS +
DOUBLE GARAGE

Please review the full list of inclusions with your Sienna Homes New Homes Consultant.

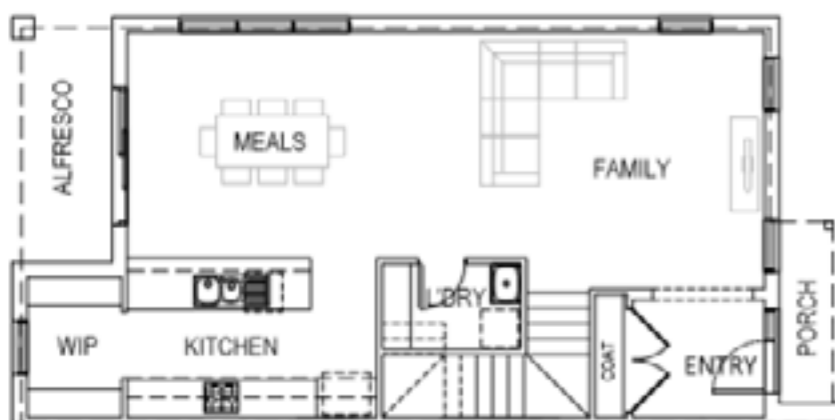
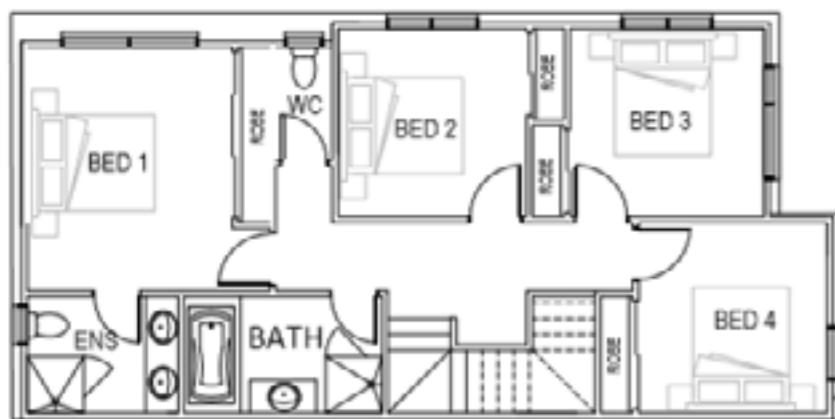


Everything You Need

Each home has been stylishly appointed with a range of quality inclusions like:

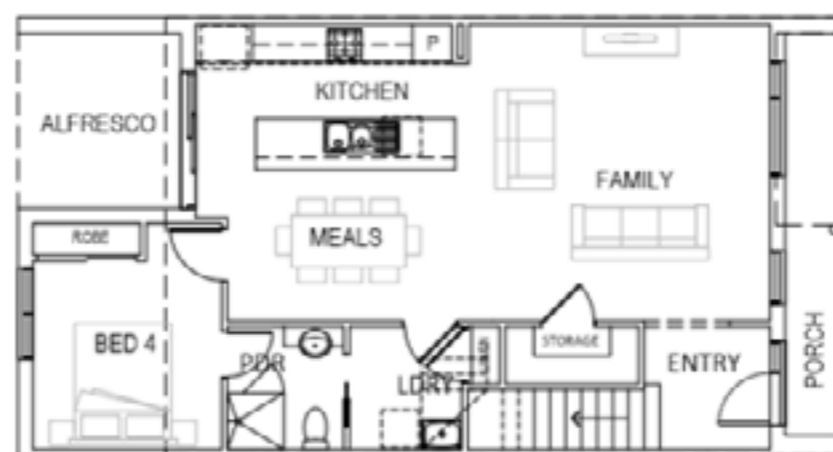
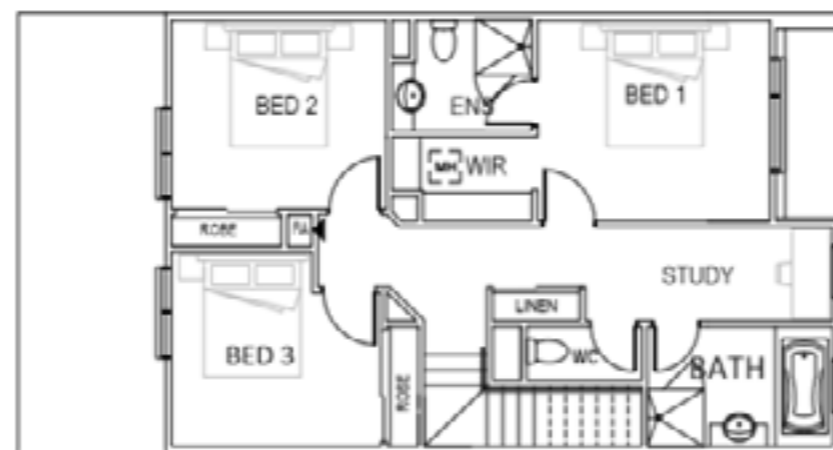
- Designer external colour schemes prepared by our professional Interior Designer
- Choose from four stylish internal colour boards, curated by our Interior Designer
- Sectional garage door with automatic motorised garage door opener with 2 handsets
- 2550mm ceiling height throughout home
- 600mm European stainless steel oooktop, rangehood and oven
- Franke stainless steel kitchen sink
- Straight mixer tap to kitchen
- Laminated finish kitchen pantry, base & overhead cupboard doors/panels
- Soft close door & draw hardware.
- Laminated finish to kitchen benchtops with 32mm thick square edge.
- Laminate vanity to bathrooms with inset basin and mixer tap
- Polished edge mirrors to bathrooms
- Brivis Gas 3 Star ducted heating to living areas & bedrooms with manual thermostat
- Floor tiles to kitchen, entry and wet areas
- Carpet to balance of floor areas
- Landscaping including garden beds, mulching/ toppings & seeded areas.
- Charcoal coloured concrete front path and rear landing,
- Concrete driveway
- Hills Paralane wall mounted clothesline
- Letterbox (numerals by client).
- Timber paling fencing approximately 1900mm high with exposed posts & capping (excluding front boundary).

Corner properties

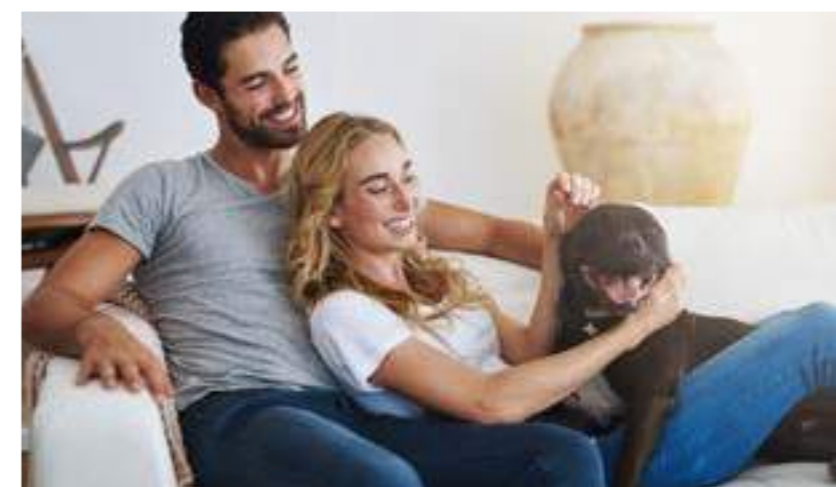


Areas			
Ground floor	73m ²	Garage	38.7m ²
First floor	77m ²	Alfresco	6.2m ²
		Porch	3.3m ²
Sub total	150m ²	Total	198.1m ²
	16.1sq		21.3sq

Internal properties



Areas			
Ground floor	77.8m ²	Garage	38.7m ²
First floor	71.7m ²	Alfresco	7.9m ²
		Porch	3.7m ²
Sub total	149.5m ²	Total	199.7m ²
	16.1sq		21.5sq



The Names Behind The Place



THE BUILDER

Sienna Homes is a multi-award-winning builder of contemporary homes. Over the last decade, Sienna have refined the art of maximising and amplifying available space. In every home they attempt to provide flexible living spaces, loads of light and clever storage solutions. It is this approach to design that has cemented the company as one of the most popular builders in Melbourne's South East, having won awards for custom designed homes, affordable development and professionalism.

As an extension to great design, Sienna Homes also work with industry leading suppliers to ensure your home is beautifully appointed with quality fittings and fixtures providing you with great peace of mind.

THE DEVELOPER

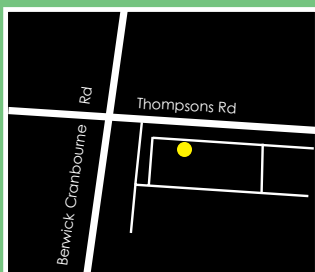
As one of Victoria's leading private residential developers, Brown Property Group has a proven track record of creating vibrant communities that families love to call home.

For over 40 years we have successfully delivered major residential developments across Melbourne and stand by our commitment to providing friendly service, quality neighbourhoods and rewarding lifestyles.

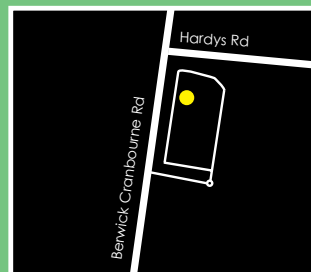
An established community in Clyde North, Highgrove will be home to over 950 families in the City of Casey. Brown Property Group are proud to be developing Highgrove, with 99% of all the lots sold and all stages completed.

Get In Touch

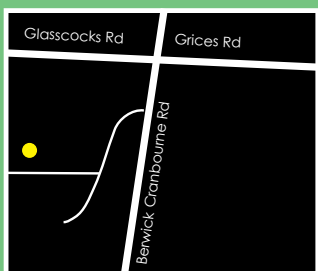
CALL 1800 SIENNA, visit siennahomes.com.au OR VISIT A DISPLAY CENTRE



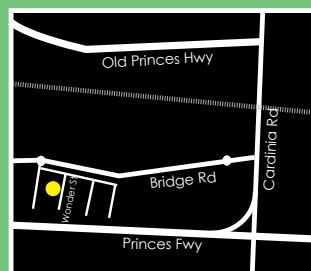
Meridian Display
8 Hyde Ave
Clyde North, VIC
7 days, 11am -5pm



Clydevale Display
26 Welsh Crescent
Clyde North VIC
7 days, 11am -5pm



Tulliallan Display
16 Lucinda Lane
Cranbourne North VIC
Sat -Wed, 11am -5pm



Arcadia Display
10 Wonder St
Officer, VIC
Sat - Wed 11am -5pm