



# \$799,500

EXCL. FHOG

## Lighthouse 27

Holly Facade

**Lot 811** (544m2) Stage 8 Quay 2

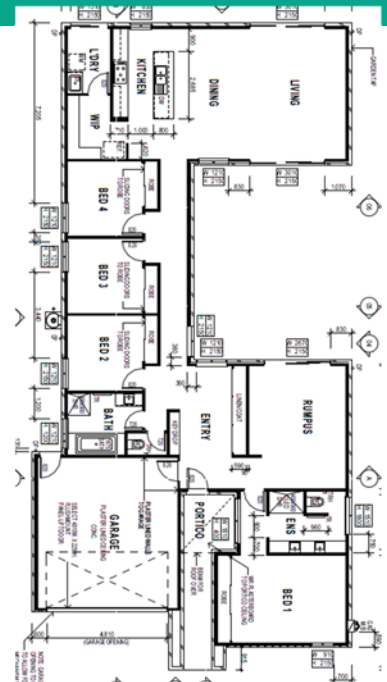
4 2 2

NOTE: Floor plan to be flipped to suit crossover.

- ✓ Fixed site costs
- ✓ 365 Day Maintenance Period
- ✓ 25 Year structural warranty
- ✓ Commercial grade aluminium awning windows includes flyscreens.
- ✓ Commercial grade aluminium sliding doors
- ✓ Remote control to garage
- ✓ Brick infills over all windows and doors incl. front garage opening
- ✓ Custom kitchen design including overhangs
- ✓ Gas ducted heating throughout design specific
- ✓ 2no 600mm ovens & 900mm range hood/cooktop
- ✓ Stainless steel dishwasher
- ✓ 3 coat paint system to walls and ceiling
- ✓ Select from up to CAT 2 bricks & roof tiles
- ✓ 20mm Cat 1 stone throughout to all wet areas.
- ✓ 2000mm high semi-frameless shower screens
- ✓ PHOENIX Towel, Toilet Roll Holders, Shower Rails & Tapware
- ✓ Floor coverings throughout Cat 2.
- ✓ Recessed tiled shower bases throughout
- ✓ 2590mm Ceiling Height ground floor OH&S and Council Requirements, Sediment Control, Temporary Fencing, Site Toilet, Crossover Protection to Existing Crossover, Perimeter Guardrail Safety Barrier (As Required).



Joanne 0438 428 103  
[www.ensohomes.com.au](http://www.ensohomes.com.au)



**DISCLAIMER:** Façade shown is INCLUDED in the advertised price. Inclusions/items listed within Enso Homes **SILVER SPECIFICATION IS INCLUDED**. Landscaping and associated external elements are for illustration purposes only. Prices are correct at the time of publishing but may change without notice after the date of printing. Prices do not include stamp duty, legal fees or any other cost incurred in connection with the purchase. **DEVELOPMENT & BAL REQUIREMENTS ARE INCLUDED**. Unless specified as a fixed price, additional cost may be incurred due to undetermined site conditions based on the results of a site survey and soil test. House and land packages are subject to land availability which may change at any time without notice. For specific details in relation to this advertised house and land package, please refer to an Enso Homes Sales Consultant. Enso Homes Pty Ltd (ABN 34 610 177 341).