



JMHOMES
SURF COAST



THE | LICHFIELD



3



2



2

QUAY2

\$820,000

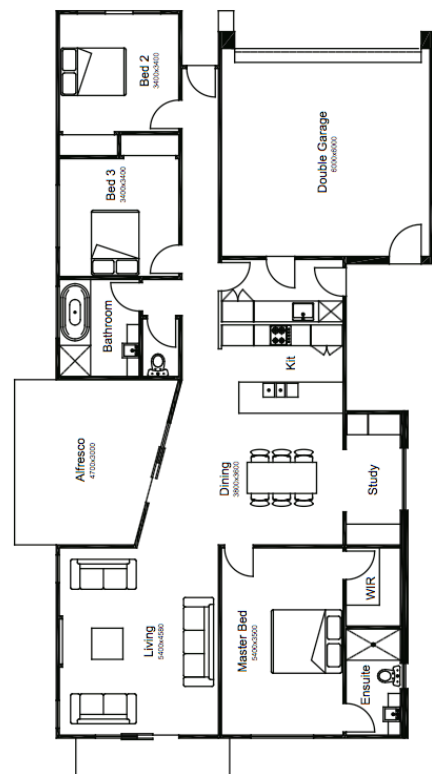
Lot - 1104
Lot Area - 488m²
Lot Frontage - 21.5m

Inclusions:

- Local Builder, Local Trade
- Colourbond Roof
- Double Glazed Throughout
- 6 Star Energy Rating
- Insulated Internal & External Walls
- Quality Tapware 15yr Guarantee
- Stone Benchtop to Kitchen
- 3 Coat Rolled Paint
- Tile Shower Bases
- Square Set Plaster
- LED Lights Throughout

3	2	2
---	---	---

LICHFIELD HOME DIMENSIONS		
Residence	151.10 sqm	16.2 sq
Garage	38.40 sqm	4.1 sq
TOTAL	189.5 sqm	20.3 sq
HOME WIDTH	11m	
HOME LENGTH	21m	



Contact Michelle 0437 335 727