



**JM HOMES**  
SURF COAST



# THE | LICHFIELD



3



2



2

**QUAY2**

**\$825,000**

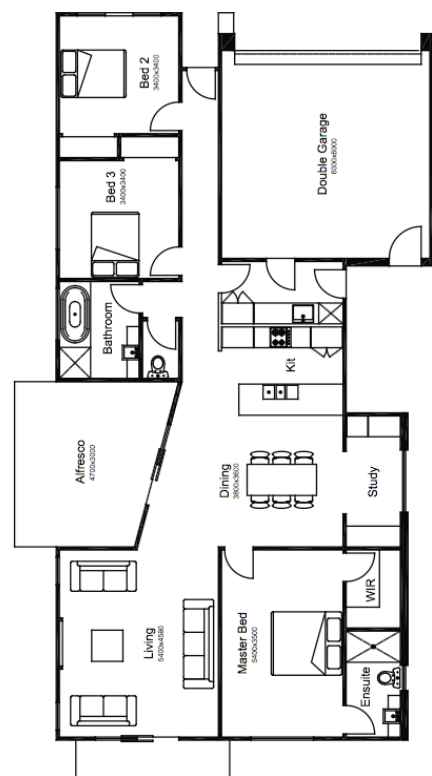
Lot - 1334  
Lot Area - 480m<sup>2</sup>  
Lot Frontage - 16m

## Inclusions:

- Local Builder, Local Trade
- Colourbond Roof
- Double Glazed Throughout
- 6 Star Energy Rating
- Insulated Internal & External Walls
- Quality Tapware 15yr Guarantee
- Stone Benchtop to Kitchen
- 3 Coat Rolled Paint
- Tile Shower Bases
- Square Set Plaster
- LED Lights Throughout

3	2	2
---	---	---

LICHFIELD HOME DIMENSIONS		
Residence	151.10 sqm	16.2 sq
Garage	38.40 sqm	4.1 sq
<b>TOTAL</b>	<b>189.5 sqm</b>	<b>20.3 sq</b>
<b>HOME WIDTH</b>	<b>11m</b>	
<b>HOME LENGTH</b>	<b>21m</b>	



Contact Michelle 0437 335 727