

# FOREVER SANCTUARY

• Forever part of the family •

# HOUSE & LAND

## M A R C O O L A 2 6 9

### LIVE IN LUXURY!

**Lot 1105 Storrer Ave  
Torquay**

(Land: 527 m<sup>2</sup>)

4 

2 

2 

Total (sqs.)	28.97
Total (m <sup>2</sup> )	269.13
Width (m)	13.35
Length (m)	24.21

# \$805,000\*

#### Features & Inclusions

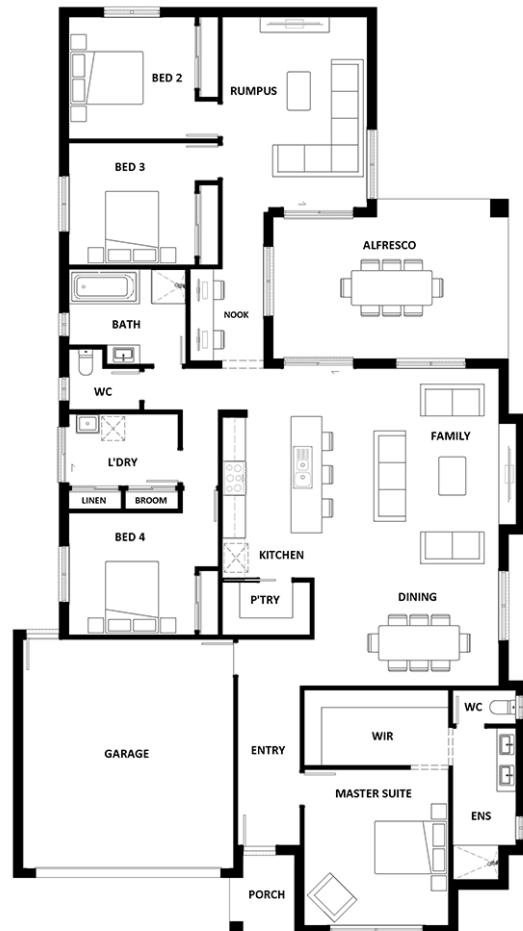
- 20mm Stone Benchtops
- Colorbond Roof
- Dishwasher
- Ducted Heating
- Facade Options Available

For more details, call

**Peter Walker**

**0434 730 962**

**Peter.Walker@pjscotthomes.com.au**



\*Dimensions, photographs, floor plans and façade images are approximate and for illustrative purposes only. They are not drawn to scale. The dimensions provided of "width" and "length" are the actual dimensions of the completed house including alfresco areas (where applicable). It is the home owner's responsibility to ensure that all applicable council regulations and estate requirements are met. Subject to land availability, pricing and site costs unless advertised as a 'fixed price package'. Driveway size based on builder's preferred siting. Check with your local builder for builder's standard range and inclusions. Photographs may include optional features or items that are not supplied by Hotondo Homes. Hotondo Homes reserves the right to change plans, specifications, materials and suppliers without notice. For more information visit your local builder or hotondo.com.au.