



QUAY2

\$957,900 EXCL. FHOG

Lighthouse 27
Emily Facade

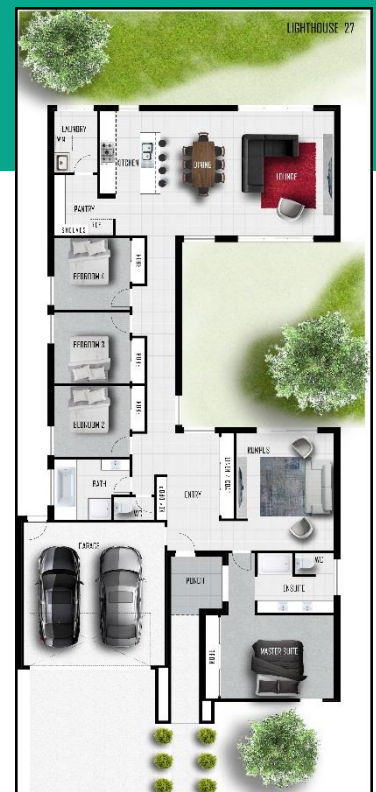
Lot 1106 (645m2) Torquay (Quay 2)

NOTE: House to be mirrored to suit orientation & driveway,

4 2 2

- ✓ Fixed site costs.
- ✓ Developer, BAL 12.5 and council requirements.
- ✓ 3rd party independent building inspections at construction.
- ✓ 3 Month Maintenance Period.
- ✓ 25 Year structural warranty.
- ✓ One on one colour & electrical selection with a qualified designer.
- ✓ Commercial grade aluminium framed awning windows and sliding doors.
- ✓ Nylon mesh flyscreens to all windows and sliding doors.
- ✓ Brick infills over all windows and doors.
- ✓ R4 ceiling batt and R2 wall batt insulation.
- ✓ Floor coverings throughout includes laminate flooring installed under skirting.

- ✓ 2590mm Ceiling Height
- ✓ 3 coat paint system to walls and ceiling.
- ✓ Remote control to Garage.
- ✓ Recessed tiled shower bases.
- ✓ Overhead cupboards & pot drawers to kitchen.
- ✓ PHOENIX Towel, Toilet Roll Holders, Shower Rails & Tapware.
- ✓ Roller blinds throughout.
- ✓ Exposed aggregate driveway.
- ✓ 12 month price freeze.
- ✓ CURRENT PROMOTION: FREE DOUBLE GLAZING TO HOME AND \$5000 COLOUR STUDIO VOUCHER.



Contact Joanne: 0438 428 103
joanne@ensohomes.com.au
www.ensohomes.com.au

DISCLAIMER: Façade shown is INCLUDED in the advertised price. Inclusions/items listed within Enso Homes **BASE SPECIFICATION WITH SILVER COLOUR PACK** IS INCLUDED. Landscaping and associated external elements are for illustration purposes only. Prices are correct at the time of publishing but may change without notice after the date of printing. Prices do not include stamp duty, legal fees or any other cost incurred in connection with the purchase. **Developers & BAL Requirements are INCLUDED.** Unless specified as a fixed price, additional cost may be incurred due to undetermined site conditions based on the results of a site survey and soil test. House and land packages are subject to land availability which may change at any time without notice. For specific details in relation to this advertised house and land package, please refer to an Enso Homes Sales Consultant. Enso Homes Pty Ltd (ABN 34 610 177 341).