

lot 1334 quay 2



## the cloudbreak

\$910,000\* house + land

### included features

Developer Requirements

NBN Connections

Raft Slab Foundations

Exposed Aggregate Driveway\*

Stone Bench tops to Kitchen, Bathrooms, Laundry & Pantry

Neff Appliances

Intergrated Dishwasher

Floor to Ceiling Tiles to Bathrooms

Heating & Cooling

Premium Floor Coverings

Choice of Polished Concrete or Engineered Timber Flooring

Premium Fixtures & Finishes

Colourbond Roof

4 Burner Stainless Steel BBQ

Pendant Lighting Allowance

Double Glazing to all Windows

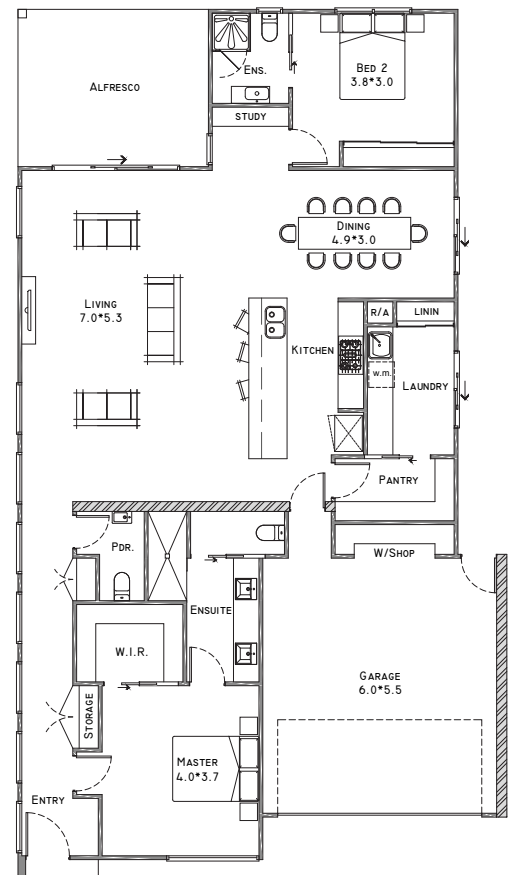
LED lighting throughout\*

Overhead cabinetry to kitchen and Laundry with choice of style and finish\*

Feature Sliding Doors to Living\*

Tiled Alfresco Area

Customisation of Floor Plan Allowed\*



Howard + Wade Pty Ltd provides assistance for designing and construction of residential properties. Any and all information displayed or included on this material, including any photos and monetary amounts, are for indicative purposes only and do not, in any way, constitute a guarantee or warranty in relation to any goods or services offered by Howard + Wade Pty Ltd, or of any price, value or fitness for purpose of any design or land. To the maximum extent permitted by law, we are not liable to you or anyone else for any loss or damage, however caused (and whether direct, indirect, consequential or economic) which may be directly or indirectly suffered in connection with your use and enjoyment of this material. For our full terms and conditions relating to our goods and services, please visit our website at [www.howardwade.com.au](http://www.howardwade.com.au)

1300 358 048 | [info@howardwade.com.au](mailto:info@howardwade.com.au)

  
howard + wade

**QUAY2**  
TORQUAY