

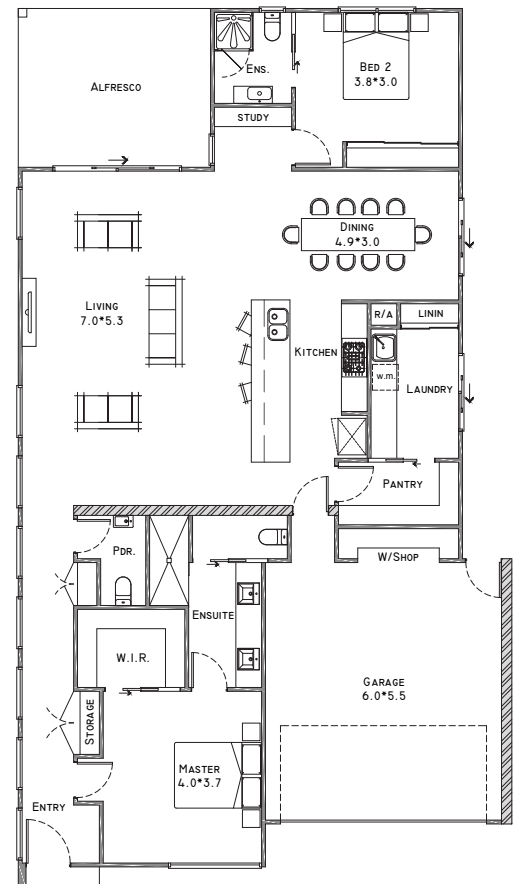
# the cloudbreak

\$883,000\* house + land



## included features

Developer Requirements	Premium Fixtures & Finishes
NBN Connections	Colourbond Roof
Raft Slab Foundations	4 Burner Stainless Steel BBQ
Exposed Aggregate Driveway*	Pendant Lighting Allowance
Stone Bench tops to Kitchen, Bathrooms, Laundry & Pantry	Double Glazing to all Windows
Neff Appliances	LED lighting throughout*
Intergrated Dishwasher	Overhead cabinetry to kitchen and Laundry with choice of style and finish*
Floor to Ceiling Tiles to Bathrooms	Feature Sliding Doors to Living*
Heating & Cooling	Tiled Alfresco Area
Premium Floor Coverings	Customisation of Floor Plan Allowed*
Choice of Polished Concrete or Engineered Timber Flooring	



Howard + Wade Pty Ltd provides assistance for designing and construction of residential properties. Any and all information displayed or included on this material, including any photos and monetary amounts, are for indicative purposes only and do not, in any way, constitute a guarantee or warranty in relation to any goods or services offered by Howard + Wade Pty Ltd, or of any price, value or fitness for purpose of any design or land. To the maximum extent permitted by law, we are not liable to you or anyone else for any loss or damage, however caused (and whether direct, indirect, consequential or economic) which may be directly or indirectly suffered in connection with your use and enjoyment of this material. For our full terms and conditions relating to our goods and services, please visit our website at [www.howardwade.com.au](http://www.howardwade.com.au)

1300 358 048 | [info@howardwade.com.au](mailto:info@howardwade.com.au)

  
howard + wade

**QUAY2**  
TORQUAY