

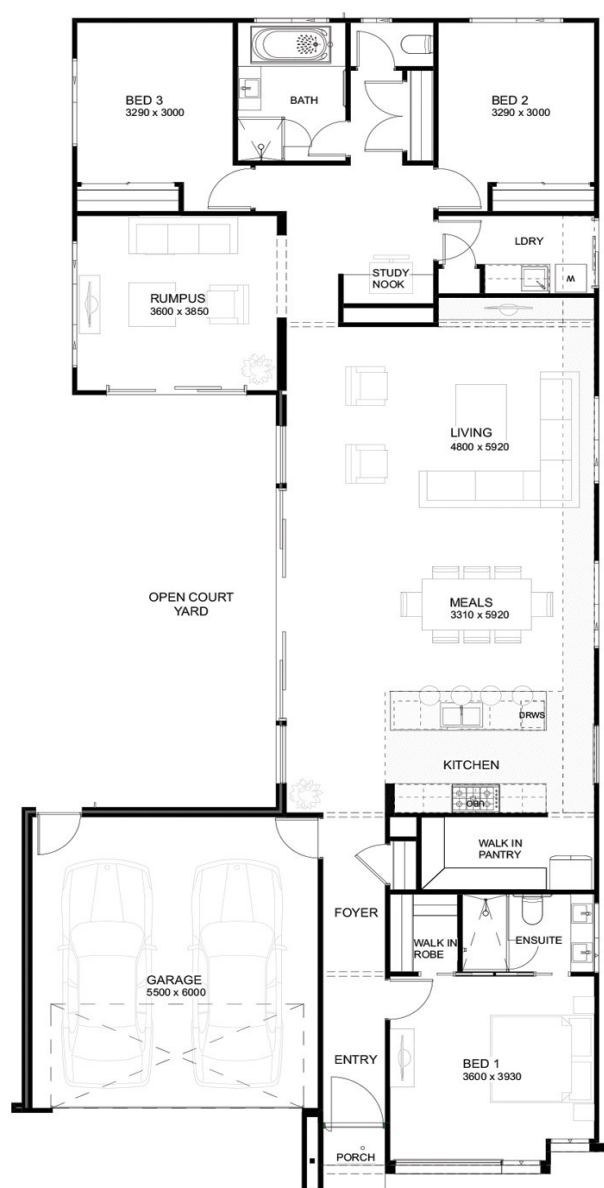
Soaring 3600mm ceilings



NEVADA 22



Lot 1101 Bright Street, QUAY 2 Torquay



Floor plan

Nevada 22

House & Land

\$728 750

Size

456m²

Inclusions;

- Soaring 3600mm ceilings in kitchen, living, dining
- Highlight windows to central living
- 2700mm ceiling height to remainder of home
- Feature skillion roof
- Site costs included to H2 Raft slab
- Rendered Hebel or brick veneer
- Colorbond or tiled roof including sarking
- Hardwood flooring and quality carpets
- 5 star rated ducted central heating plus evaporative cooling
- LED downlights throughout
- 40mm Deluxe range Caesarstone Benches to kitchen
- 900mm wide kitchen appliances and dishwasher
- Soft close joinery throughout
- Exposed aggregate driveway and path
- 1200mm wide entry door including digital door lock
- Square set cornices
- Window coverings
- Flyscreens to windows and sliding doors
- NBN provisioning
- Sectional garage door including remotes
- 3 coat paint application

**Further terms and conditions apply. For comprehensive house and land specifications please speak with a Hudson Ridge representative. CBB-U 49722*

www.hudsonridge.com.au

[fb.com/hudsonridgebuilders](https://www.facebook.com/hudsonridgebuilders) [@hudsonridgebuilders](https://www.instagram.com/hudsonridgebuilders)

CONTACT

sales@hudsonridge.com.au

P: 5291 9252