



Lot 919

3 2 2

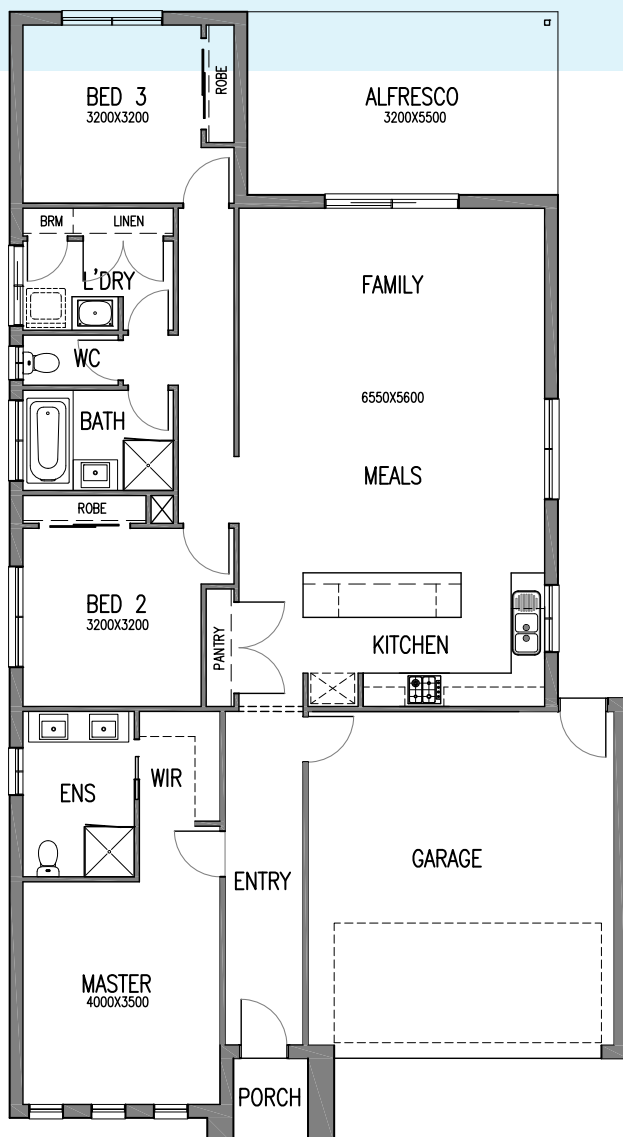
House & Land Package - \$692,600.00

Size

- 21.5sq

Inclusions

- Fixed site costs up to class P soil.
- Developer & council requirements.
- 6 Month Maintenance Period.
- Colourbond roof.
- One on one colour appointment.
- Aluminium framed awning windows and sliding doors.
- Nylon mesh flyscreens to all windows.
- Brick infills over all windows and doors.
- Central heating throughout & split system cooling to living area.
- Floor coverings throughout includes 12mm laminate flooring & Cat 2 carpet.
- 2590mm Ceiling Height.
- 900mm appliances.
- Stone tops to Kitchen and Bathrooms.
- Sectional garage door including remotes.
- Recessed tiled shower bases.
- Roller blinds throughout.
- LED lighting throughout.
- Exposed Agg driveway.



1300 804 410

info@levonixhomes.com.au

www.levonixhomes.com.au

@levonixhomes.com.au

