

LEVONIX
HOMES



Lot 1608



House & Land Package - \$723,935.00

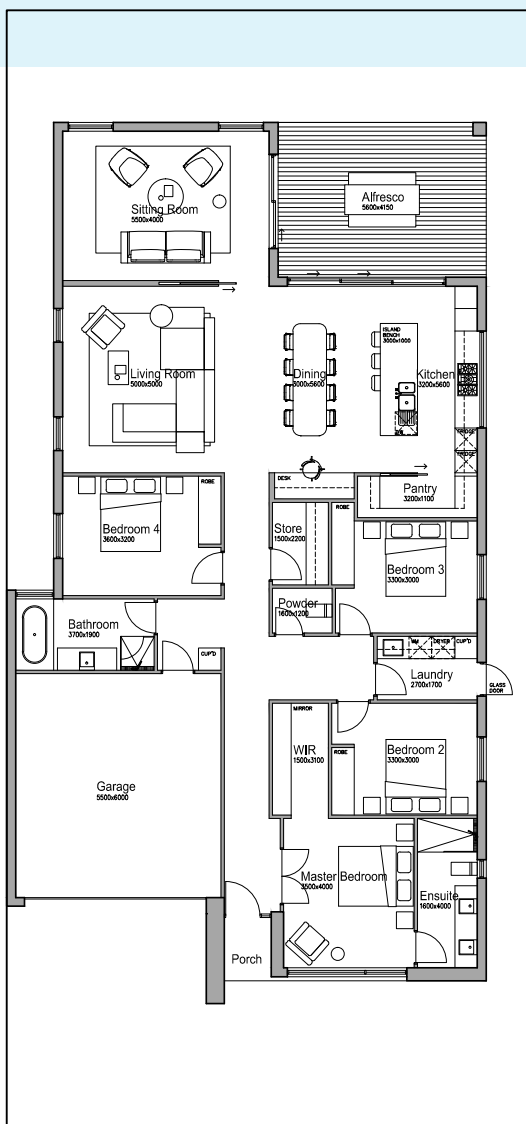
Size

- 28.7sq

Inclusions

- Fixed site costs up to class P soil.
- Developer & council requirements.
- 6 Month Maintenance Period.
- Colourbond roof.
- One on one colour appointment.
- Aluminium framed awning windows and sliding doors.
- Nylon mesh flyscreens to all windows.
- Brick infills over all windows and doors.
- Central heating throughout & split system cooling to living area.
- Floor coverings throughout includes 12mm laminate flooring & Cat 2 carpet.
- 2590mm Ceiling Height.
- 900mm appliances.
- Stone tops to Kitchen and Bathrooms.
- Sectional garage door including remotes.
- Recessed tiled shower bases.
- Roller blinds throughout.
- LED lighting throughout.

*Price does not include government grants available to you.



1300 804 410

info@levonixhomes.com.au

www.levonixhomes.com.au

[f](https://www.facebook.com/levonixhomes) [ig](https://www.instagram.com/levonixhomes) @levonixhomes.com.au



DISCLAIMER: Façade design shown is included in the advertised price, but may need to be altered to achieve developer approval and available lots. Inclusions/items listed are part of the Levonix Homes standard inclusions list. Landscaping, fencing and external images are for illustration purposes only. Prices are correct at the time of publishing but may change without notice. Prices do not include stamp duty, legal fees or any other cost incurred in connection with the purchase of the land. Unless specified as a fixed price, additional cost may be incurred due to undetermined site conditions based on the results of a site survey and soil test. House and land packages are subject to land availability which may change at any time without notice. For specific details in relation to this advertised house and land package, please refer to a Levonix Homes Sales Consultant on 1300804410. Levonix Homes (ABN 5616877384)