

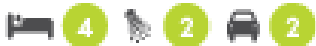


# Tribeca 25

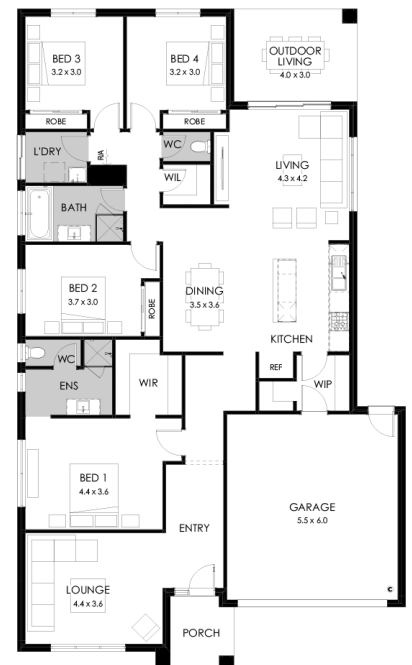
Package from **\$688,900**

Lot 1604 Inshore Drive, Torquay

Land size: 486m<sup>2</sup>



- Stunning designer façade included
- Double glazing (including sliding doors)
- 2400mm high ceilings
- Westinghouse 600mm kitchen appliances
- Quality Caroma basins and tapware
- Quality Dulux paint
- Double garage with two remotes
- Site cost allowance
- Developer guidelines
- 25 Year Structural Guarantee
- 12 Month Maintenance



Call Rowan Huxhagen 0459 466 378  
Or email [rowan@boutiquehomes.com.au](mailto:rowan@boutiquehomes.com.au)  
[boutiquehomes.com.au](http://boutiquehomes.com.au)

QUAY2  
TORQUAY

boutique  
homes

Image used is an artist impression for illustrative purposes only and may show decorative items not included in the price. Further terms and conditions apply to this offer including with respect to the price, for the full terms and conditions please visit <http://www.boutiquehomes.com.au/disclaimer>.