

HOUSE & LAND PACKAGE

\$526,039



BAHAMA 236

Lot 169 Abbeydale Road,

Greenbank QLD 4124 - Harvest Rise Estate

Land size - 551m² House Dimensions - 12.27m x 21.61m

ON DISPLAY AT:
5 LIVINGSTONE STREET, LOGAN RESERVE



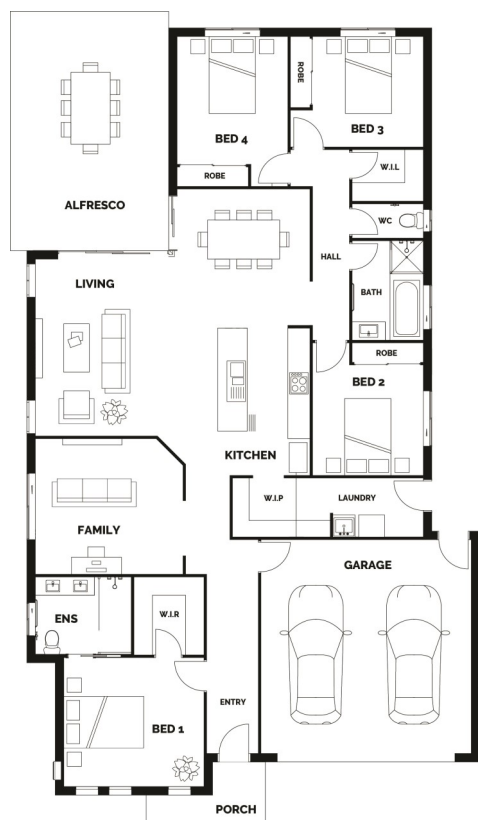
4



2



2



House Package Includes:

- Façade Pictured Included - Others available
- Stone Benchtops Throughout
- Dishwasher & Stainless Steel Appliances
- LED Downlights & Ceiling Fans Throughout
- Carpets & Tiles or Timber Look Vinyl
- Semi Frameless Shower Screens and Shower Niches
- Driveway, Letterbox & Clothesline
- Exposed Aggregate Porch and Alfresco
- Colorbond Roof
- Full NBN Provisions
- Personalised Colour Consultation
- H1 Slab
- BAL 19 Included
- Logan City Council Fees
- And so much more. Contact us to view all our standard inclusions.
- Unlimited changes to the plan! If you can dream it, we can build it!

House Price: \$228,039

Land Price: \$298,000

FLOOR AREA

Living	169.06m ²
Garage	36.06m ²
Alfresco	27.84m ²
Porch	3.87m ²
Total	236.83m ²

