

# HOUSE & LAND PACKAGE

## \$548,139



### BAHAMA 236

Lot 167 Abbeydale Rd

Greenbank QLD 4124 - Harvest Rise Estate

Land size - 551m<sup>2</sup> House Dimensions - 12.27m x 21.61m

ON DISPLAY AT:  
5 LIVINGSTONE STREET, LOGAN RESERVE



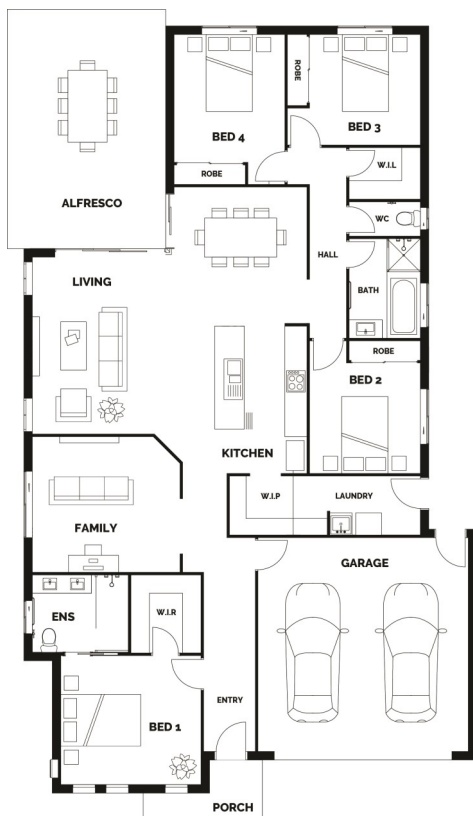
4



2



2



#### Turnkey House Package Includes:

- Façade Pictured Included - Others Available
- Airconditioner to living and Masterbedroom
- Stone Benchtops to kitchen and bathroom
- Stainless Steel Appliances incl Dishwasher
- LED Downlights Throughout
- Ceiling Fans to bedrooms
- Carpets & Tiles or Timber Look Vinyl Flooring
- Semi Frameless Shower Screens and Shower Niches
- Driveway, Letterbox & Clothesline
- Exposed Aggregate Porch and Alfresco
- Flycreens and blinds
- Colorbond Roof
- Full NBN Provisions
- Personalised Colour Consultation
- H1 Slab allowance Turf front and Back

Please note: this does not include piercing or retaining or fencing

#### FLOOR AREA

Living	169.06m <sup>2</sup>
Garage	36.06m <sup>2</sup>
Alfresco	27.84m <sup>2</sup>
Porch	3.87m <sup>2</sup>
Total	236.83m <sup>2</sup>

