

# HOME AND LAND

Images shown are for illustrative purposes only and may not represent the final product such as lighting, window furnishings, timber look garage door & timber windows. Façade details including entry door and window sizing may vary between house types. Pricing also excludes features such as fencing, landscaping, letterbox, decking, driveway and any notable features of the façade. Please speak with your sales consultant for further details.

LOT 190, HARVEST RISE, GREENBANK (504M2)

FLOOR PLAN: BLACKWOOD 22\_210  
FACADE: TASMAN

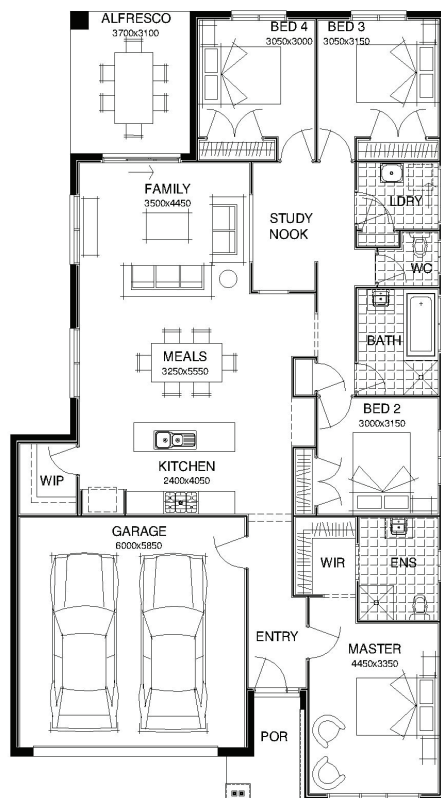
FROM\*  
**\$489,096**

4 🚗 2 🍷 2 🚗 1 🚗 22sq 📏



## PACKAGE INCLUSIONS:

- ▼ DEVELOPER AND COUNCIL REQUIREMENTS
- ▼ LIFETIME STRUCTURAL GUARANTEE\*\*\*
- ▼ SITE WORKS ALLOWANCE UP TO H1 SOIL TYPE
- ▼ 20MM CAESARSTONE BENCHTOP TO KITCHEN
- ▼ 2 REVERSE CYCLE SPLIT SYSTEM AC TO MASTER AND LIVING
- ▼ CARPET & TILES THROUGHOUT
- ▼ CEILING FANS ALL BEDROOMS AND ALFRESCO
- ▼ REMOTE CONTROL GARAGE UNIT



For enquiries please contact:

Carol Lok  
0402 799 189  
Simonds.com.au

Rosedale  
23 Kestrel Street  
ROCHEDALE QLD 4123  
carol.lok@simonds.com.au

HARVEST  
RISE