



HOME AND LAND

Images shown are for illustrative purposes only and may not represent the final product such as lighting, window furnishings, timber look garage door & timber windows. Façade details including entry door and window sizing may vary between house types. Pricing also excludes features such as fencing, landscaping, letterbox, decking, driveway and any notable features of the façade. Please speak with your sales consultant for further details.

LOT 154, HARVEST RISE, GREENBANK (260M2)

FLOOR PLAN: GREENMOUNT 15_140
FACADE: ORD

FROM*
\$368,106

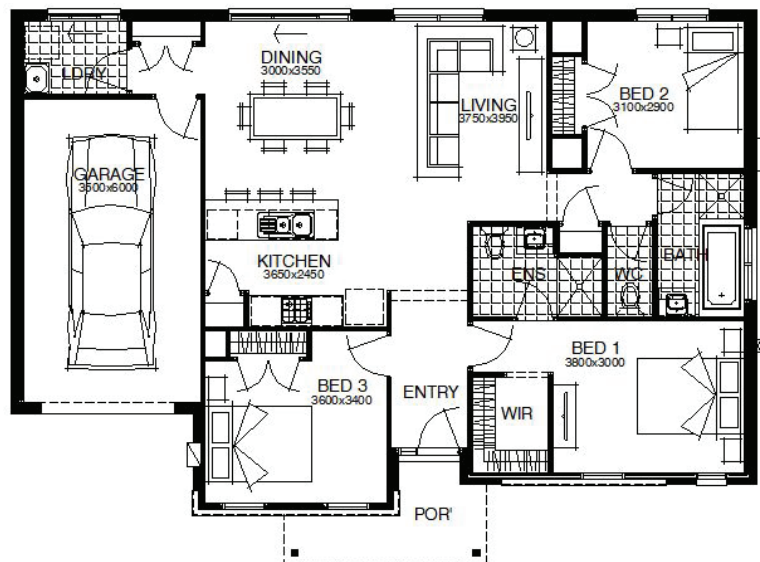
3 🚗 2 🌧️ 1 🚗 1 🏠 15sq 📏

\$20K OF UPGRADES

Good One, Gary!

PACKAGE INCLUSIONS:

- ▼ DEVELOPER AND COUNCIL REQUIREMENTS
- ▼ LIFETIME STRUCTURAL GUARANTEE***
- ▼ FIXED SITE COST INCLUDING RETAINING WALLS AND ROCK REMOVAL IF REQUIRED
- ▼ 20MM CAESARSTONE BENCHTOP TO KITCHEN
- ▼ 2 REVERSE CYCLE SPLIT SYSTEM AC TO MASTER AND LIVING
- ▼ CARPET & TILES THROUGHOUT
- ▼ CEILING FANS ALL BEDROOMS AND ALFRESCO



For enquiries please contact:

Jason Nicholls
0438 771 688
Simonds.com.au

QLD

LOGANHOLME QLD 4129
jason.nicholls@simonds.com.au

HARVEST
RISE