

SIMONDS
BUILDING HOMES SINCE 1949



HOME AND LAND

Images shown are for illustrative purposes only and may not represent the final product such as lighting, window furnishings, timber look garage door & timber windows. Facade details including entry door and window sizing may vary between house types. Pricing also excludes features such as fencing, landscaping, letterbox, decking, driveway and any notable features of the facade. Please speak with your sales consultant for further details.

LOT 393, PAVILLION STREET, GREENBANK (350M2)

FLOOR PLAN: SUNDOWN LIVING TO FRONT
FACADE: COOK

FIXED PRICE

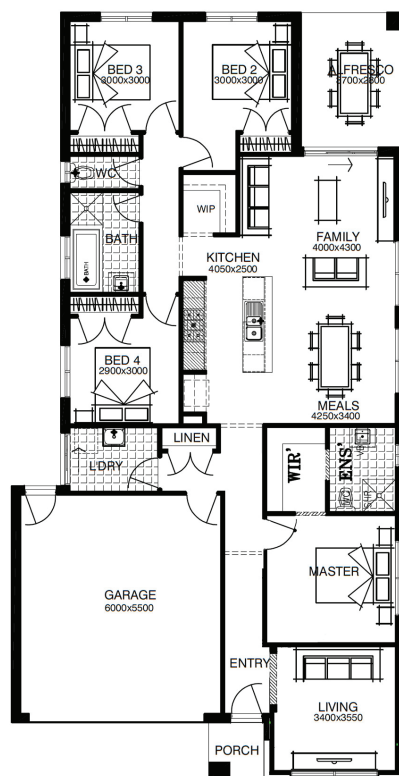
\$402,688

4 🚗 2 🍷 2 🚗 2 🚗 21sq 📏

BIRTHDAY BONUS*
\$19k of options for \$0

PACKAGE INCLUSIONS:

- ▼ Fixed Site Costs
- ▼ Developer and Council Requirements
- ▼ Lifetime Structural Guarantee**
- ▼ Carpet and Timber Laminate Flooring
- ▼ European 900mm Stainless Steel Appliances
- ▼ Air-Conditioner
- ▼ Stainless Steel Dishwasher
- ▼ Exposed Aggregate Concrete Driveway
- ▼ Keyed Locks to Windows*
- ▼ 90mm Structural Pine
- ▼ 3 Coat Paint System



For enquiries please contact:
AJ Dorman
0422653669
Simonds.com.au

QLD
LOGANHOLME QLD 4129
aj.dorman@simonds.com.au



All Fixed Price Home and Land packages are subject to Developer and Council approval and is based on Simonds standard floor plan with preferred siting (without alterations). Package Price does not include stamp duty, government, legal or bank charges. Community Infrastructure Levy and Asset Protection Permit are not included in pricing and is to be arranged by the client directly with the Developer (if applicable). Any alterations may incur additional charges. Confirm land price and availability prior to purchase. Simonds reserves the right to withdraw or amend pricing, inclusions and promotion at any time without notice. This package applies to QLD Simonds Home Range only. *Flyscreens and keyed locks to all standard openable windows. **Please refer to the terms and conditions for the Lifetime Structural Guarantee at www.simonds.com.au/terms-and-conditions. Please speak with your sales consultant for further details. Pricing is current at 10/12/2019.