

**SIMONDS**  
BUILDING HOMES SINCE 1949



# HOME AND LAND

LOT 391, PAVILLION STREET, GREENBANK (350M2)

FLOOR PLAN: BRAMPTON 19\_185  
FACADE: HOWITT

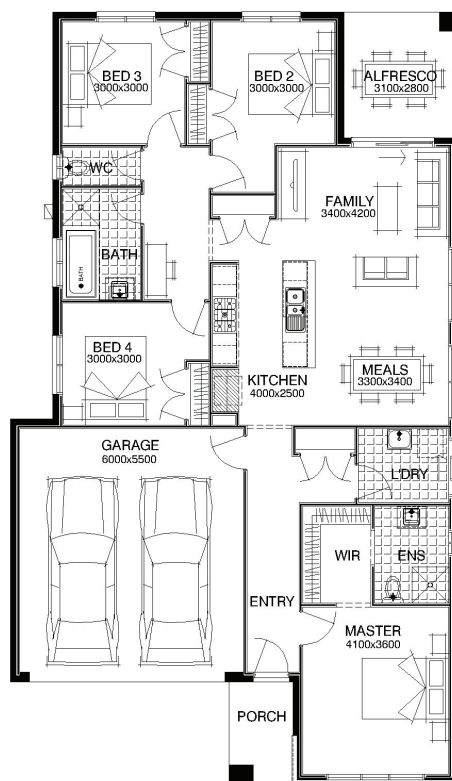
**FIXED PRICE**  
**\$398,818**

4 🚗 2 🍷 2 🚗 1 🏠 19sq 📏

**BIRTHDAY BONUS\***  
**\$19k** of options for \$0

## PACKAGE INCLUSIONS:

- ▼ Fixed Site Costs
- ▼ Developer and Council Requirements
- ▼ Lifetime Structural Guarantee\*\*
- ▼ Carpet and Timber Laminate Flooring
- ▼ European 900mm Stainless Steel Appliances
- ▼ Air-Conditioner
- ▼ Stainless Steel Dishwasher
- ▼ Exposed Aggregate Concrete Driveway
- ▼ Keyed Locks to Windows\*
- ▼ 90mm Structural Pine
- ▼ 3 Coat Paint System



**For enquiries please contact:**  
AJ Dorman  
0422653669  
[Simonds.com.au](http://Simonds.com.au)

QLD  
LOGANHOLME QLD 4129  
[aj.dorman@simonds.com.au](mailto:aj.dorman@simonds.com.au)



All Fixed Price Home and Land packages are subject to Developer and Council approval and is based on Simonds standard floor plan with preferred siting (without alterations). Package Price does not include stamp duty, government, legal or bank charges. Community Infrastructure Levy and Asset Protection Permit are not included in pricing and is to be arranged by the client directly with the Developer (if applicable). Any alterations may incur additional charges. Confirm land price and availability prior to purchase. Simonds reserves the right to withdraw or amend pricing, inclusions and promotion at any time without notice. This package applies to QLD Simonds Home Range only. \*Flyscreens and keyed locks to all standard openable windows. \*\*Please refer to the terms and conditions for the Lifetime Structural Guarantee at [www.simonds.com.au/terms-and-conditions](http://www.simonds.com.au/terms-and-conditions). Please speak with your sales consultant for further details. Pricing is current at 10/12/2019.