

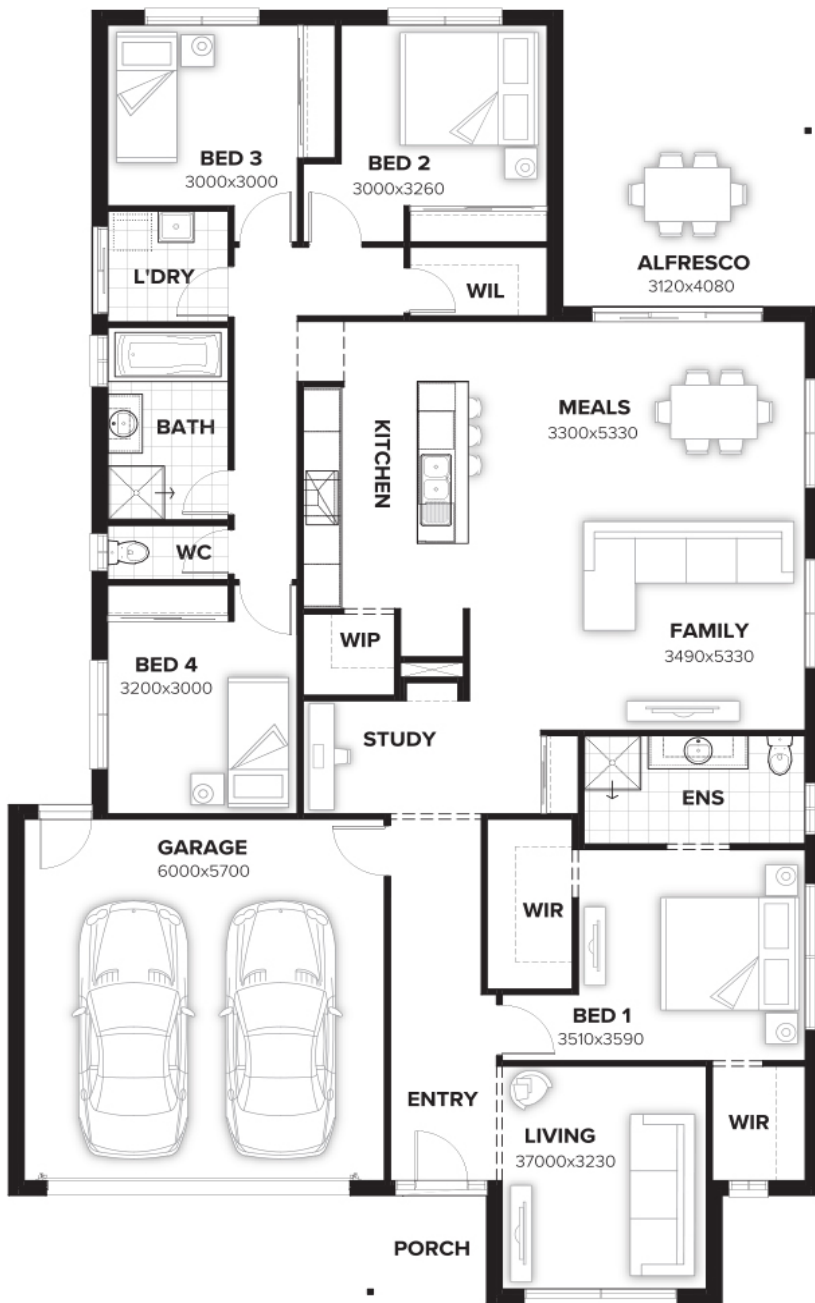


**\$471,505**

**Hawthorne 237 DELTA FACADE**

**Lot 377 Steed Road, Greenbank  
(Harvest Rise)**

- 90mm timber frames on all Burbank homes
- Allowances for all site costs (H1 slab and piling)
- Full carpet and tiles; concrete and fan to Alfresco
- LED lighting; Stone benchtops and overheads to Kitchen
- Letterbox; NBN Ready; Council Fees all included
- Driveway; Landscaping; Top soil and instant turf
- Upgraded facade and front door + more inclusions!



**Hayley Hart** e [Hayley.Hart@burbank.com.au](mailto:Hayley.Hart@burbank.com.au) t **0424 306 379**

t **13 BURBANK** e [QLD.Enquiries@burbank.com.au](mailto:QLD.Enquiries@burbank.com.au) w [www.burbank.com.au](http://www.burbank.com.au)

\*Burbank reserve the right to alter any price without notice. Subject to developer design approval. Conditions apply. All photos and illustrations are representative only. Images may contain internal or external upgrade items like feature renders and timber look garage doors, or items not supplied by Burbank, which include furniture, landscaping, decking, fencing and external lighting. All designs are the property of Burbank and must not be used, reproduced, copied or varied, wholly or in part without written permission from an authorised Burbank representative. Copyright: Burbank Australia (QLD) Pty Ltd. ABN 77 102 014 615. Subject to Burbank's preferred sitting. QBCC number 1046544 Printed On: 8/07/2020 Created On: 8/07/2020