



**WELSH**  
homes

WELSHHOMES.COM.AU

# HOME AND LAND PACKAGE



**\$586,189\***

CAPITAL 1219  
TRADITIONAL FACADE

Lot 906 Rathmines Avenue , Ellarook , Truganina

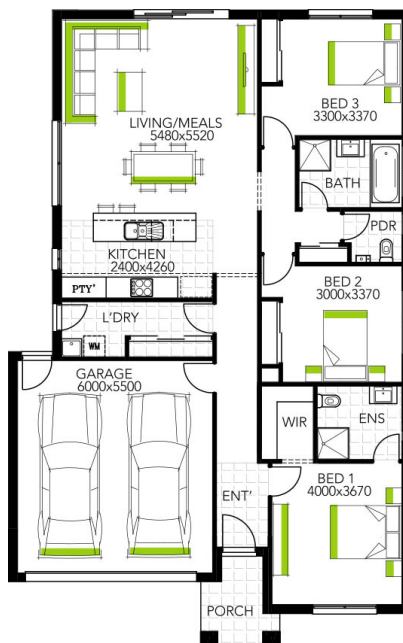
SIZE:

LAND: 400 m2  
HOME: 19 sqs



## PACKAGE INCLUDES:

- » Fixed site costs, NBN/Opticomm provision & council requirements.
- » 900mm stainless steel appliances including dishwasher.
- » Concrete driveway & path (Up to 35m2).
- » Sectional panel lift garage door with 2 remotes.
- » Developer guidelines & covenants.
- » Stone benchtops to kitchen and overhead cupboards incl. over the fridge
- » All flooring coverings: carpet, tiles or timber laminate.
- » Tiled shower bases, shower rail assembly with semi frameless shower screens.
- » Professionally selected exterior & interior colour scheme options.



**WELSH**  
homes

Image may include upgrade items and may depict fixtures, finishes and features not supplied by Welsh Homes such as landscaping and fencing. Accordingly, any prices in this flyer do not include the supply of any of those items. \*Home and Land Package price correct at time of printing and subject to change without notice. Package price excludes external lighting, telephone service, stamp duty on land, legal fees and conveyancing costs including titles and property report. Floorplan is representation of facade depicted unless otherwise stated. Welsh Homes reserves the right to alter the images or descriptions without notice. See your Welsh Homes sales consultant for full details of standard inclusions. Land supplied by developer. Land prices and availability are subject to change without notice. All home & land packages are subject to developer approval. Fast Tracked packages include strict terms and conditions, refer to welshhomes.com.au for details.

0448 887 786 | Gabriel Chong | [gabriel.chong@welshhomes.com.au](mailto:gabriel.chong@welshhomes.com.au) | [WELSHHOMES.COM.AU](http://WELSHHOMES.COM.AU)