

House & Land Package.



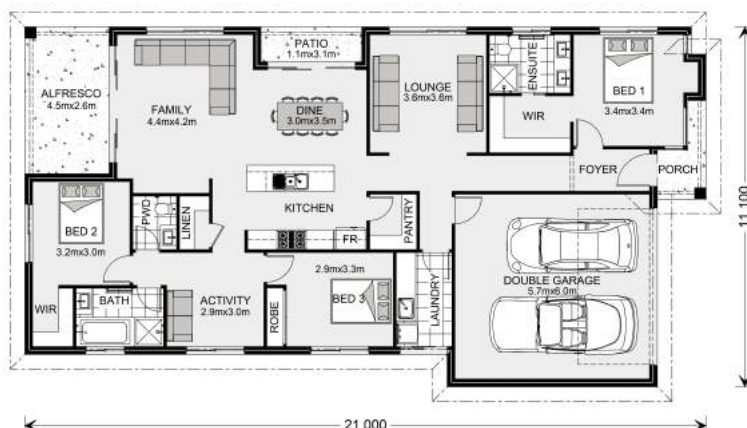
From \$646,946* (incl GST)

Lot 325 Banyan Hills (530 m²)

Package includes[^]:

- + Slab, brick, cladding & colorbond roof to comply with BH covenants
- + Tiles to wet areas, carpet to first floor, vinyl plank to ground floor
- + Windows + flyscreens, LED Lights, double power points
- + Smeg Appliances, cabinetry + caesarstone benchtops
- + Concrete porch, alfresco, driveway
- + Kitchen promotion valid to 31/12/2018

[^]Please see the website for a full list of inclusions.



Portside 211.

3 2.5 2

Itemised Floor Area	Area
Internal	155.30
Garage	37.30
Alfresco	11.80
Court Yard	3.40
Porch	3.20
Gross	211.00

Drop in for a chat today.

5/107 Minjungbal Drive,
Tweed Heads South NSW 2486

Contact us.

Call Sam Carroll on 0404 103 348,
email sam.carroll@gjgardner.com.au or
visit us online at gjgardner.com.au

Terms and conditions *Package price is based on standard home, standard floor plan and standard façade (may be smaller than façade shown). Package may be subject to developer's design review panel, council final approval and G.J. Gardner Homes procedure of purchase. Package price excludes stamp duty on land, legal fees and conveyancing costs (including transfer of title and searches). Prices are inclusive of GST and may change without notice. Package subject to two separate contracts. G.J. Gardner Homes makes no guarantee the lot number advertised will be available at the time of purchase. Photographs may depict fixtures, finishes and features not supplied by G.J. Gardner Homes. Excluded items include but are not limited to landscaping items such as planter boxes, retaining walls, water features, pergolas, screens, driveways and decorative items such as fencing and outdoor kitchens or barbecues. This design and illustration remains the property of G.J. Gardner Homes and may not be reproduced in whole or in part without written consent. For detailed home pricing, please talk to a New Homes Consultant. Frase Constructions Pty Ltd T/As G.J. Gardner Homes Tweed Heads & Ballina. Builders licence 191221C. Created 15/11/2018.