



FIXED
PRICE
PACKAGE



HOME AND LAND

Images shown are for illustrative purposes only and may not represent the final product such as lighting, window furnishings, timber look garage door & timber windows. Facade details including entry door and window sizing may vary between house types. Pricing also excludes features such as fencing, landscaping, letterbox, decking, driveway and any notable features of the facade. Please speak with your sales consultant for further details.

LOT 3940, MERRIFIELD ESTATE, MICKLEHAM (448M2)

FLOOR PLAN: WESTBURY 2514
FACADE: PENFOLD

FIXED PRICE

\$603,519

FIRST HOME OWNERS PRICE \$593,519

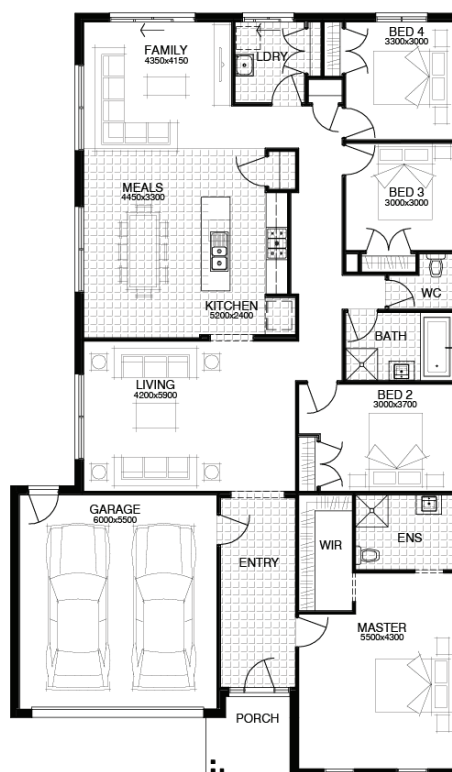
WELLNESS LIVES HERE
You should too.

*Terms & conditions apply, visit www.simonds.com.au/terms-and-conditions

PACKAGE INCLUSIONS:

- ▶ DEVELOPER & COUNCIL REQs
- ▶ WELLNESS - DARWIN ESSENTIALS PACK
- ▶ UP TO 40M2 OF 100MM PLAIN CONCRETE PAVING
- ▶ 3 COAT PAINT APPLICATION
- ▶ SECTIONAL LIFT GARAGE DOOR WITH 2 REMOTES
- ▶ BRICK INFILL ABOVE WINDOWS
- ▶ FLOORING THROUGHOUT
- ▶ TECHNIKA 900MM STAINLESS STEEL APPLIANCES

4 2 2 2 25sq



For enquiries please contact:

Chandra Deep
0411 078 424
Simonds.com.au

Metro North

VIC
chandra.deep@simonds.com.au

merrifield
LIVING

All Fixed Price Home and Land packages are subject to Developer and Council approval and is based on Simonds standard floor plan with preferred siting (without alterations). Package Price does not include stamp duty, government, legal or bank charges. Community Infrastructure Levy and Asset Protection Permit are not included in pricing and is to be arranged by the client directly with the Developer (if applicable). Any alterations may incur additional charges. Confirm land price and availability prior to purchase. Simonds reserves the right to withdraw or amend pricing, inclusions and promotion at any time without notice. Please refer to the terms and conditions at www.simonds.com.au/terms-and-conditions. This package applies to VIC Express range only. Please speak with your sales consultant for further details. Pricing is current at 15/11/2018.