

FOREVER SANCTUARY

• Forever part of the family •

HOUSE & LAND

BIRCH GROVE 222

ENTER YOUR
SANCTUARY

Lot 3939 Urquhart St
Merrifield
Mickleham

(Land: 400 m²)

4 

2 

2 

Total (sqs.)	23.94
Total (m ²)	222.41
Width (m)	11.1
Length (m)	23.58

\$539,080*

Features & Inclusions

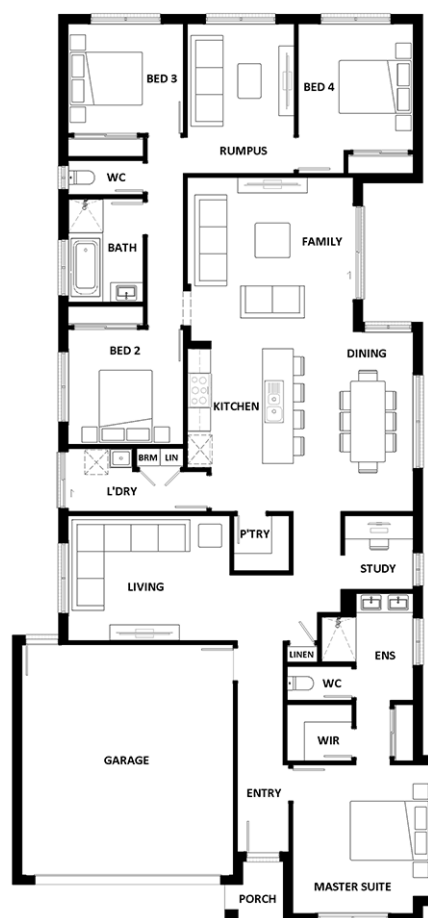
- 900mm Stainless Steel Appliances
- Carpet and tiles throughout
- Ducted Heating
- Facade Included
- Facade Options Available

For more details, call

Alynta Pirronelli

03 9404 0888

sales@hotondosouthmorang.com.au



*Dimensions, photographs, floor plans and facade images are approximate and for illustrative purposes only. They are not drawn to scale. The dimensions provided of "width" and "length" are the actual dimensions of the completed house including alfresco areas (where applicable). It is the home owner's responsibility to ensure that all applicable council regulations and estate requirements are met. Subject to land availability, pricing and site costs unless advertised as a 'fixed price package'. Driveway size based on builder's preferred siting. Check with your local builder for builder's standard range and inclusions. Photographs may include optional features or items that are not supplied by Hotondo Homes. Hotondo Homes reserves the right to change plans, specifications, materials and suppliers without notice. For more information visit your local builder or hotondo.com.au.