

HOTONDO HOMES

# FOREVER SANCTUARY

• Forever part of the family •

# HOUSE & LAND

## J A X T O N 2 6 1

### IT'S MY HOTONDO HOME

**Lot 3945 Seperation St  
Merrifield  
Mickleham**

(Land: 508 m<sup>2</sup>)

4  2.5  2 

Total (sqsq.)	28.08
Total (m <sup>2</sup> )	260.82
Width (m)	10.34
Length (m)	16.72

# \$699,395\*

#### Features & Inclusions

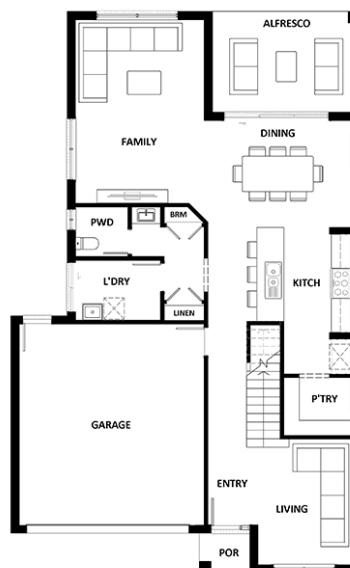
- 900mm Stainless Steel Appliances
- Carpet and tiles throughout
- Ducted Heating
- Local builder/Local trades
- Open-plan kitchen, living and dining

For more details, call

**Alynta Pirronelli**

**03 9404 0888**

**sales@hotondosouthmorang.com.au**



\*Dimensions, photographs, floor plans and façade images are approximate and for illustrative purposes only. They are not drawn to scale. The dimensions provided of "width" and "length" are the actual dimensions of the completed house including alfresco areas (where applicable). It is the home owner's responsibility to ensure that all applicable council regulations and estate requirements are met. Subject to land availability, pricing and site costs unless advertised as a 'fixed price package'. Driveway size based on builder's preferred siting. Check with your local builder for builder's standard range and inclusions. Photographs may include optional features or items that are not supplied by Hotondo Homes. Hotondo Homes reserves the right to change plans, specifications, materials and suppliers without notice. For more information visit your local builder or hotondo.com.au.