



From*

\$ 511,195



LOT 813(405m2)

Graziers Crescent

Circa Estate, Clyde North VIC

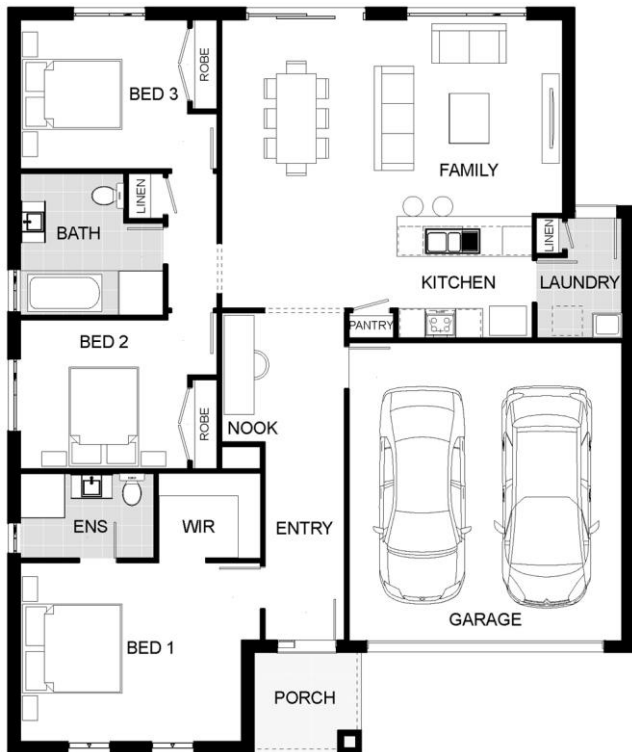
THE H15

Facade: F7

HOME AREA:18.62 SQS



Life starts here



INCLUSIONS:

- Spacious Meals & Family Area
- Quality Stainless Steel Appliances Inc 900mm Freestanding Oven
- Gas Ducted Heating
- Solar Hot Water System
- Overhead Cupboard to Kitchen
- Flooring Included
- Professional Colour Consultation
- Sectional Garage Door
- Colorbond Roof
- 6 Star Energy Rating
- Bushfire Attack Level 12.5 Included
- Bluescope Steel House Frame
- 50 Year Structural Guarantee
- Please contact us for our current Promotion.



CONTACT: Khara Abate
M: 0497 072 187
E: kharaa@jgkinghomes.com.au

www.jgkinghomes.com.au

*Please note these standard inclusion specification is subject to change without notice. JG King reserves the right to substitute items with an equivalent product at anytime. Subject to developer guidelines and/or council requirements. Whilst every endeavour has been made to ensure the accuracy of the information provided all images are for illustration purposes only and may depict fixtures, finishes and features either not supplied or are upgrade options by JG King Homes, including but not limited to Landscaping, Fencing, Light Fittings and Furniture. Geographical restrictions apply and travel surcharges may be applicable depending on building location. JG King reserves the right to withdraw or alter the prices at any time without notice. Copyright © 2016. - Reproduction in any form either in whole or part is forbidden. JG King Pty Ltd (T/A J G King Homes) ABN 21 006 627 210 Registered Building Practitioner Licence DBU-2579