



EASTWEST
HOMES

HOUSE & LAND
PACKAGE

A



4 2 2

CIRCA 1886

\$521,750*

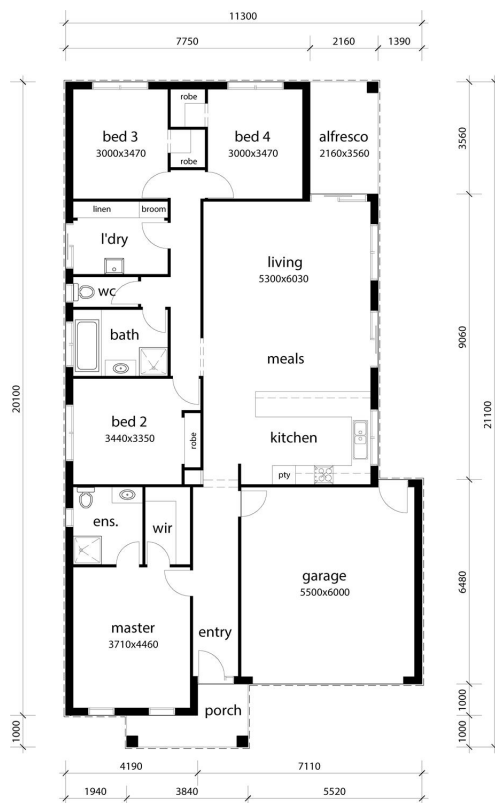
HOUSE & LAND PACKAGE

Lot 751 Bailey Crescent (396m²)
CLYDE NORTH

The Latrobe 22 (207.9m²)

- Austral bricks & Boral roof tiles;
- Stoddart sectional garage door w/ 2 remotes;
- Bradnam's aluminium windows;
- Corinthian feature entry door;
- 3 bedrooms with BIR;
- Designer kitchen w/ 600mm appliances;
- Open plan meals / living;
- Elegance floor tiles & Carpet Call carpet;
- Braemar 3.7 Star ducted heating;
- TV point & data point;
- Franke double bowl kitchen sink;
- Wattyl paint;
- Stylus whiteware, tapware & accessories;
- FHOG + more!

Edmond Bao - 0455 444 654



*Price is subject to soil test, site survey and developer approval.

All Images are for illustrative purposes only. Please contact Edmond Bao for exact specifications and included features.