

# adenbrookhomes



## \$574,890

Non-Fixed Price



Width: 10.8 m | Depth: 19.9 m

HOME SIZE: 179.7m<sup>2</sup> | 19.3 sq | LAND SIZE: 462m<sup>2</sup>

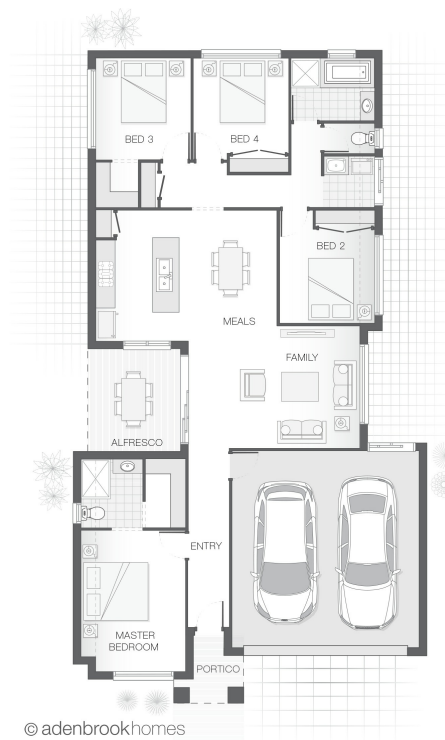
CIRCA | Lot 1029 Anvil Way, Clyde North VIC 3978

## THE HUNTER

Bexley | Standard Design

All packages come with an extensive list of Standard Inclusions, PLUS:

- China basin and dual flush toilets
- Niche to showers
- Semi-frameless shower screen
- Double lock-up garage with remotes
- Tiled roof
- Carpet & tile throughout
- Tiling to all wet areas
- Stone throughout
- Three (3) coat internal paint system with Dulux paint
- 20mm stone benchtops
- 900mm stainless steel appliances
- Coloured concrete driveway
- Bench to laundry
- NBN provisions
- Under roof alfresco
- 2590mm ceiling height



© adenbrookhomes

For more information:

**Khara Abate** | New Home Sales Consultant | 0411 868 276 | [khara.abate@adenbrook.com.au](mailto:khara.abate@adenbrook.com.au)

Plans and designs depicted may change with facade selection. All drawings and photographs are for illustrative purposes only. This work is exclusively owned by AB Aust. IP Pty Ltd (CAN 163 575 077) and cannot be reproduced or copied wholly or in part, in any form without permission of AB Aust. IP Pty Ltd. Any prices in this document include GST, are subject to change without notice, relate only to the base house price and package inclusions and all items specified on page 1 (one) of this flyer. Site costs will vary depending on site conditions, local Council requirements, estate guidelines and any other statutory requirements applicable. For more details on pricing, home and land packages and inclusions, please talk to one of our friendly New Home Consultants today or visit [www.adenbrookhomes.com.au](http://www.adenbrookhomes.com.au)

Package ID: 8493

[adenbrookhomes.com.au](http://adenbrookhomes.com.au)