

## HOUSE & LAND PACKAGE

- Stylish, practical floor plans
- Amazing on-trend inclusions
- aaaa

- Stylish, practical floorplans
- Amazing on-trend inclusions beyond the essentials

*Sanctuary*  
AT ARMSTRONG



Upgrade and save with our

**STEP UP  
UPGRADE**

**Harwood 251**

4 2 2 15.89m

bridgewater 

**Lot: 666 Languid Street, Armstrong Creek**

**Estate: Sanctuary at Armstrong**

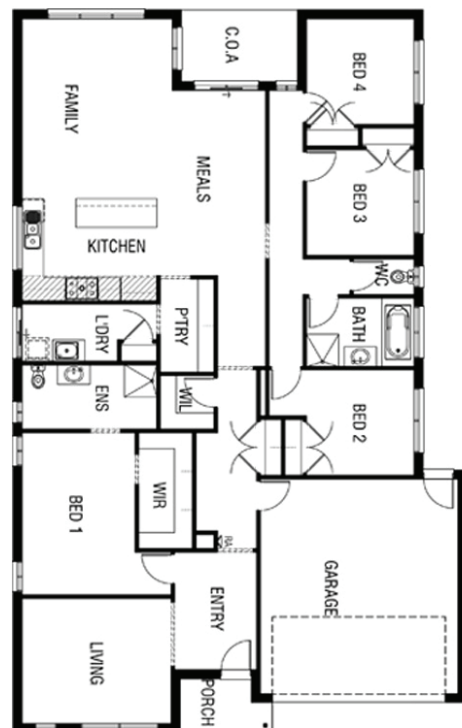
**Block size: 508m<sup>2</sup>**

**Title Exp: June 2020**

**House Size: 25.15sq**

### Package Includes:

- Up to \$40,000 of upgrades (House specific)
- Developers Guidelines
- Fixed Site Costs
- Colorbond® roof
- 900mm Stainless Steel Upright Cooker
- 900mm Stainless Steel Canopy Rangehood
- Overhead Cabinets to the Kitchen
- Soft Close hinged doors and drawers
- Ducted Heating
- 6-star energy rating on BEST orientation



[www.fairhavenhomes.com.au](http://www.fairhavenhomes.com.au)

**Nathan Schlink**

t: 0413 515 919

e: [nschlink@fairhavenhomes.com.au](mailto:nschlink@fairhavenhomes.com.au)

**Armstrong Display**

Unity Drive

MOUNT DUNEED, VIC 3217