



THE | OCEAN GROVE

...lifestyle by design

LUXURY INCLUSIONS

- ⊙ Above six star energy rating
- ⊙ Concrete raft slab to M class specification
- ⊙ Double glazing throughout
- ⊙ Colorbond roof
- ⊙ Insulated garage door with remote control
- ⊙ Square set plastering
- ⊙ Ceramic tiles and quality carpet
- ⊙ Westinghouse stainless steel appliances inc dishwasher
- ⊙ Quality Argent tapware
- ⊙ Villeroy & Boch sanitary ware
- ⊙ Decina Bath
- ⊙ Tiled shower bases
- ⊙ Semi-frameless glass shower screens
- ⊙ Oliveri kitchen and laundry sinks
- ⊙ Caesarstone kitchen bench tops
- ⊙ Dalkin ducted split system heating/cooling
- ⊙ LED trader downlights
- ⊙ Trader light switches and power points
- ⊙ Insulated internal walls



3D FLY THROUGH



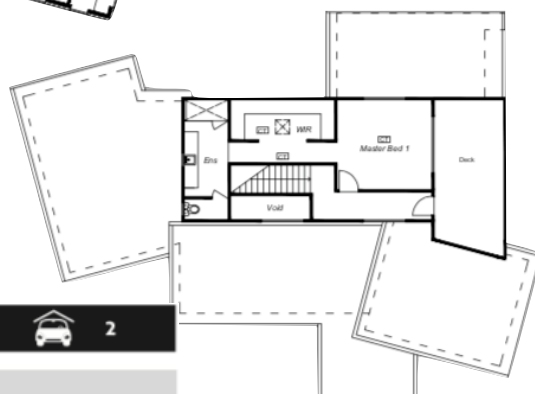
OCEAN GROVE HOME DIMENSIONS

Lower Level Residence	161.1sqm	17.3sq
Garage	31.2sqm	3.3sq
Upper Level Residence	57.2sqm	6.1sq
TOTAL	249.5sqm	26.9sq
HOME WIDTH	13.2m	
HOME LENGTH	21.6m	

ARMSTRONG

\$801,900

Lot - 4825
Lot area - 524m²
Lot Frontage - 16m



Contact Hannah
0437 335 727