



Price excludes: Fencing, Landscaping, Concrete pavers, Planter boxes, Decking

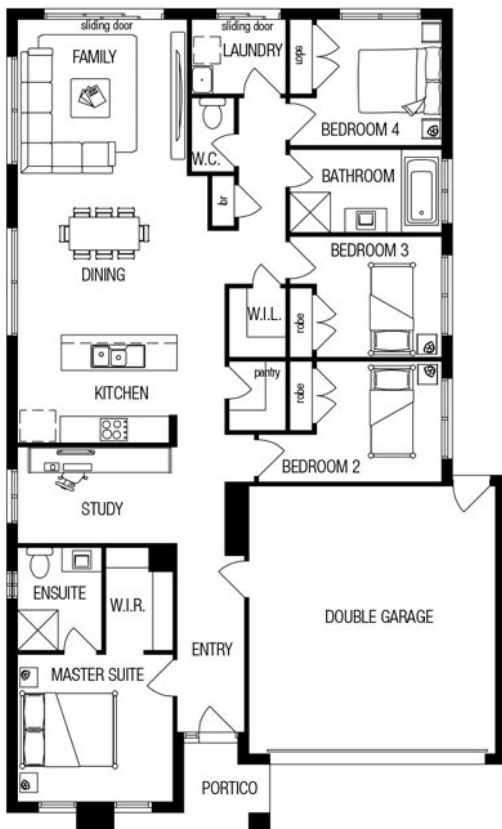
FIXED PRICE

## \$464,564\*

LOT 643 SPIRIT CRESCENT  
SANCTUARY ESTATE  
ARMSTRONG CREEK

LAWSON 20  
TRADITIONAL FACADE

BLOCK SIZE | 350M<sup>2</sup>



### FIXED PRICE PACKAGE INCLUDES:

THE LAWSON 20 WITH TRADITIONAL FACADE BUILT TO OUR INDUSTRY LEADING BASE SPECIFICATIONS AND LAND, PLUS:

- ✓ Fixed site costs<sup>^</sup>
- ✓ Laminate timber flooring
- ✓ Luxury carpet to bedrooms
- ✓ Stainless steel oven & cooktop
- ✓ Contemporary tapware
- ✓ Stainless steel canopy rangehood
- ✓ Remote controlled garage door
- ✓ Feature render to façade
- ✓ Fibre Optic Package
- ✓ Lifetime structural guarantee<sup>#</sup>
- ✓ Developer requirements
- ✓ 600mm stainless steel appliances
- ✓ Window flyscreens throughout
- ✓ Concrete driveway & path (30m<sup>2</sup>)



**Easy &  
Affordable.**

**1300 METRICON**  
[www.metricon.com.au](http://www.metricon.com.au)

BUILD WITH CONFIDENCE

**LIFETIME**  
STRUCTURAL GUARANTEE

homesolution

**m**  
metricon

\*Packages correct at time of printing and subject to change without notice. <sup>^</sup>Package includes timber laminate, two strip floating floor. <sup>†</sup> Luxury carpet is 100% Nylon plush pile carpet. Package price excludes external lighting, telephone service, customer account opening fees, stamp duty on land, legal fees and conveyancing costs including titles and property report. Home Solution reserves the right to alter the images or descriptions in this flyer without notice. See your HomeSolution consultant for full details of standard inclusions. Land supplied by developer. Land prices and availability are subject to change without notice. All home & land packages are subject to developer approval. Newfield Real Estate Pty Ltd ACN 159 312 722, Licence number 028051L. VIC Builder's Licence: CDB-U 52967 #For details on our Lifetime structural guarantee visit [metricon.com.au/terms/structuralguarantee](http://metricon.com.au/terms/structuralguarantee). Package Printed Date: 20/11/2019 Price Region: Geelong