

## HOUSE & LAND PACKAGE

- Stylish, practical floorplans
- Amazing on-trend inclusions beyond the essentials

**Sanctuary**  
AT ARMSTRONG



**Tathra 283**

4 2 2 12.5m



**Lot: 643 Spirit Crescent, Armstrong Creek**

**Estate: Sanctuary at Armstrong**

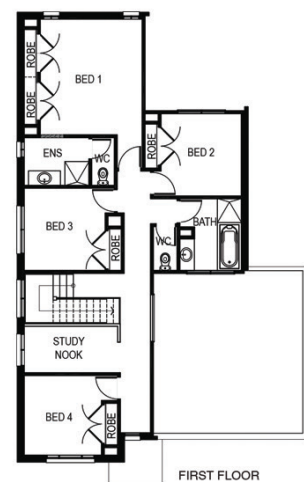
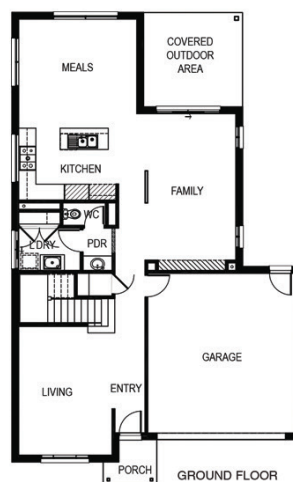
**Block size: 350m<sup>2</sup>**

**Title Exp: October 2020**

**House Size: 28.27sq**

### Package Includes:

- Up to \$40,000 of upgrades (House specific)
- Developers Guidelines
- Fixed Site Costs
- Colorbond® roof
- 900mm Stainless Steel Upright Cooker
- 900mm Stainless Steel Canopy Rangehood
- Overhead Cabinets to the Kitchen
- Soft Close hinged doors and drawers
- Ducted Heating
- 6-star energy rating on BEST orientation



[www.fairhavenhomes.com.au](http://www.fairhavenhomes.com.au)

**Nathan Schlink**  
t: 0413 515 919

e: [nschlink@fairhavenhomes.com.au](mailto:nschlink@fairhavenhomes.com.au)

**Geelong**

, VIC