



**Lot 4046 Eminence Street,  
Mt. Duneed** \$990P/A OWNERS CORP. – CLUB ACCESS



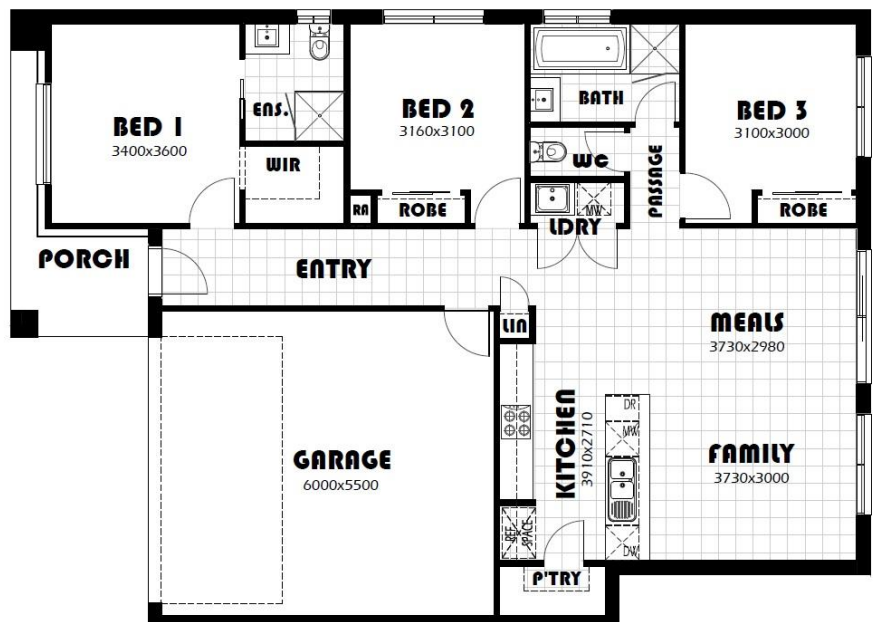
#### House and land package

Turn key solution

**\$462,480**

**\$442,480** FIRST HOME BUYER PRICE

- 20mm stone to kitchen and bathrooms
- 2.59m ceilings
- Tiled shower bases and semi frameless shower screens
- Coloured concrete driveway
- Sliding doors to wardrobes
- LED down lights throughout
- Remote to garage
- Carpet and floor tiles through out
- Site cost and council requirements
- Block out Holland blinds throughout
- 1/2 share fencing
- Front and rear landscaping
- Clothes line and letter box
- Estate requirements



Kooyong 16

**Contact Dan Halsey – 0410 561 911**