

# Xpress

Built by SIMONDS



## FIXED PRICE HOME AND LAND

Images shown are for illustrative purposes only and may not represent the final product such as lighting, window furnishings, timber look garage door & timber windows. Façade details including entry door and window sizing may vary between house types. Pricing also excludes features such as fencing, landscaping, letterbox, decking, driveway and any notable features of the façade. Please speak with your sales consultant for further details.

LOT 4617, Armstrong Estate, Mount Duneed (448M2)

FLOOR PLAN: Valerian 25\_232  
FACADE: Amber

# \$511,844

FIRST HOME OWNERS PRICE \$491,844

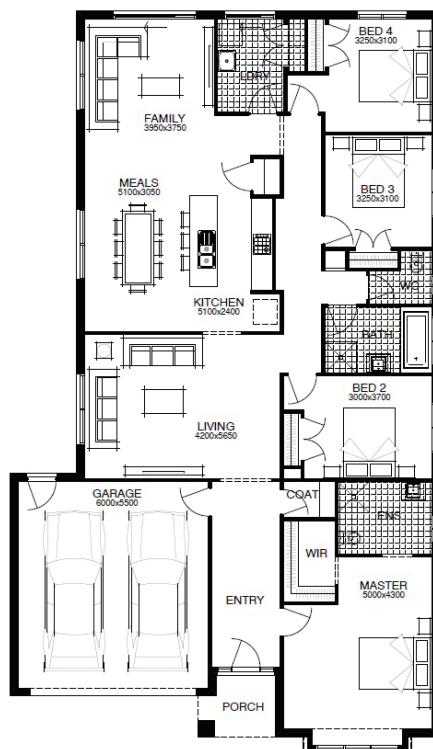
**WELLNESS LIVES HERE**  
*You should too.*

\*Terms & conditions apply, visit [www.simonds.com.au/terms-and-conditions](http://www.simonds.com.au/terms-and-conditions)

4 2 2 2 25sq

### PACKAGE INCLUSIONS:

- ▶ LIFETIME STRUCTURAL GUARANTEE
- ▶ DEVELOPER & COUNCIL REQs
- ▶ 450MM EAVES TO FACADE
- ▶ KEYED WINDOW LOCKS TO ALL OPENABLE WINDOWS
- ▶ 3 COAT PAINT APPLICATION
- ▶ SECTIONAL LIFT GARAGE DOOR
- ▶ TILED SHOWER BASE
- ▶ FINANCE SOLUTIONS AVAILABLE
- ▶ ... AND MUCH MORE!



For enquiries please contact:

Bruno Esposti  
0435219103

[simondsxpress.com.au](http://simondsxpress.com.au)

GEELONG VIC 3220

Geelong

[bruno.esposti@simonds.com.au](mailto:bruno.esposti@simonds.com.au)

**ARMSTRONG**  
BY SIMONDS

All Fixed Price Home and Land packages are subject to Developer and Council approval and is based on Simonds standard floor plan with preferred siting (without alterations). Package Price does not include stamp duty, government, legal or bank charges. Community Infrastructure Levy and Asset Protection Permit are not included in pricing and is to be arranged by the client directly with the Developer (if applicable). Any alterations may incur additional charges. Confirm land price and availability prior to purchase. Simonds reserves the right to withdraw or amend pricing, inclusions and promotion at any time without notice. Please refer to the terms and conditions at [www.simonds.com.au/terms-and-conditions](http://www.simonds.com.au/terms-and-conditions). This package applies to VIC Xpress range only. Please speak with your sales consultant for further details. Pricing is current at 29/03/2020.