



Price excludes: Fencing, Landscaping, Concrete pavers, Planter boxes, Decking

## \$612,974\*

LOT 5429, INLET DRIVE  
MOUNT DUNEED ESTATE  
MOUNT DUNEED

WHITELEY 25MK2  
HARCREST FACADE

BLOCK SIZE | 528M<sup>2</sup>



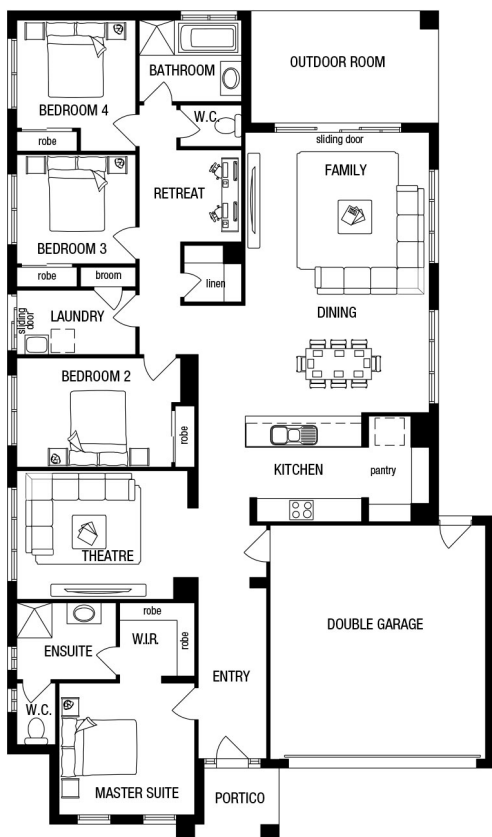
4



2



2



### PACKAGE INCLUDES:

THE WHITELEY 25MK2 WITH HARCREST FACADE BUILT TO OUR INDUSTRY LEADING BASE SPECIFICATIONS AND LAND, PLUS:

- ✓ Lifetime structural guarantee#
- ✓ 20mm stone benchtop to Kitchen
- ✓ Feature front render (up to 30m<sup>2</sup>)
- ✓ Fibre optic package
- ✓ Window locks to all ground floor windows
- ✓ Choice of 2040mm glass panel entry doors
- ✓ Choice of stylish basins to ensuite/bathroom
- ✓ Floor Coverings throughout
- ✓ Personalised colour selection with an interior designer
- ✓ Stunning Facade included
- ✓ 90 days maintenance period
- ✓ 3 coat paint system to walls and ceiling



**More home  
for less.**

**1300 METRICON** |  
[www.metricon.com.au](http://www.metricon.com.au)

**FREEDOM**

**m**  
metricon

\*Home and Land Package price correct at time of printing and subject to change without notice. Package price excludes external lighting, telephone service, customer account opening fees, stamp duty on land, legal fees and conveyancing costs including titles and property report. See your Metricon new home advisor for full details of standard inclusions. Land supplied by developer. Land prices and availability are subject to change without notice. All home & land packages are subject to developer approval. #For details on our Lifetime structural guarantee visit [metricon.com.au/terms/structuralguarantee](http://metricon.com.au/terms/structuralguarantee). Newfield Real Estate Pty Ltd ACN 159 312 722, Licence number 028051L. VIC Builder's Licence: CDB-U 52967 +Typical site cost allowance included in the price. Additional site costs may apply if site survey and soil tests indicate the presence of fill or more than 300mm of land fall or presence of rock above the typical site allowance made. Package Printed Date: 13/05/2020 Price Region: Geelong