



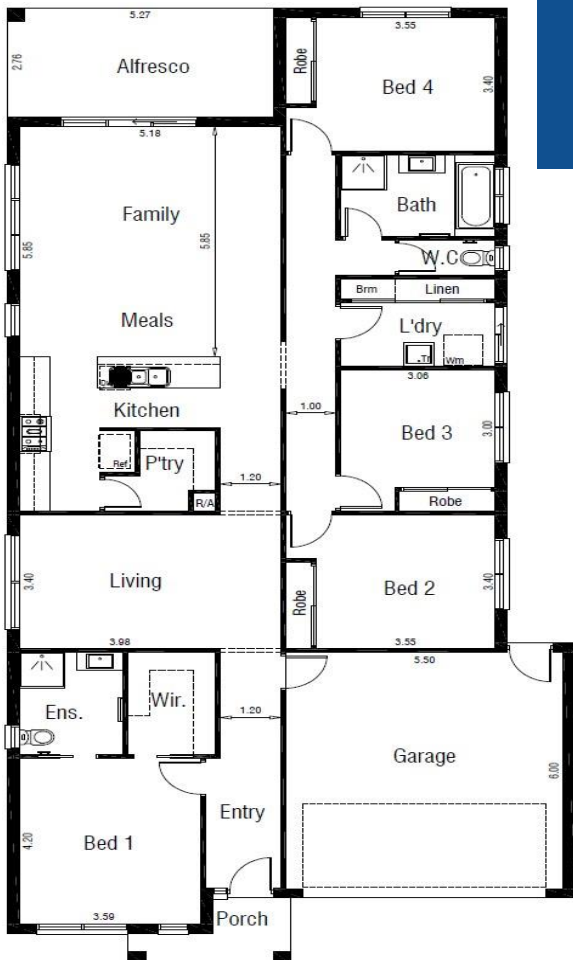
**FIXED SITE COSTS & TURN KEY
20K LESS WITH FHOG**



4	2	2
		

- ALL DESIGN GUIDELINES
- CHOICE OF FACADE'S
- 2590 HIGH CEILINGS
- FRONT & REAR LANDSCAPING
- FENCES, BLINDS & LETTERBOX
- 900MM APPLIANCES
- 20MM STONE KIT, ENSUITE & BATHROOM
- HEATING AND COOLING
- COLOURED CONCRETE DRIVEWAY & PATHS
- **PLUS MUCH MORE!**

domenic@cpmcgroup.com.au



CPMCGROUP.COM.AU