



# FIXED PRICE HOME AND LAND

Images shown are for illustrative purposes only and may not represent the final product such as lighting, window furnishings, timber look garage door & timber windows. Facade details including entry door and window sizing may vary between house types. Pricing also excludes features such as fencing, landscaping, letterbox, decking, driveway and any notable features of the facade. Please speak with your sales consultant for further details.

LOT 4902, Armstrong Estate, Mount Duneed (400M2)

FLOOR PLAN: Cayenne 29\_270  
FACADE: Coraline

# \$727,259

5 2 2 3 29sq

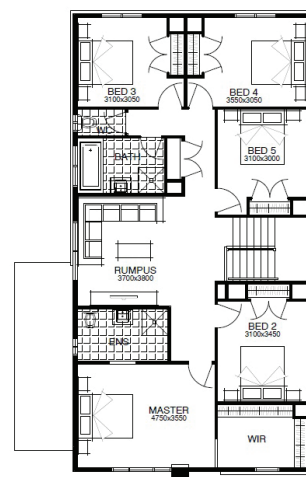
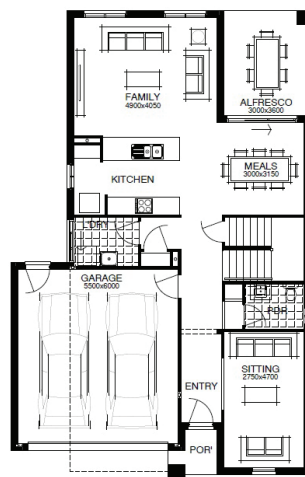
FIRST HOME OWNERS PRICE \$717,259

**WELLNESS LIVES HERE**  
*You should too.*

\*Terms & conditions apply, visit [www.simonds.com.au/terms-and-conditions](http://www.simonds.com.au/terms-and-conditions)

## PACKAGE INCLUSIONS:

- ▶ LIFETIME STRUCTURAL GUARANTEE
- ▶ DEVELOPER & COUNCIL REQs
- ▶ 450MM EAVES TO FACADE
- ▶ KEYED WINDOW LOCKS TO ALL OPENABLE WINDOWS
- ▶ 3 COAT PAINT APPLICATION
- ▶ SECTIONAL LIFT GARAGE DOOR
- ▶ TILED SHOWER BASE
- ▶ FINANCE SOLUTIONS AVAILABLE
- ▶ ... AND MUCH MORE!



For enquiries please contact:  
James Hill  
0458 588 078  
[simondsxpress.com.au](http://simondsxpress.com.au)

GEELONG VIC 3220  
Geelong  
[james.hill@simonds.com.au](mailto:james.hill@simonds.com.au)

**ARMSTRONG**  
BY SIMONDS