



FIXED PRICE HOME AND LAND

Images shown are for illustrative purposes only and may not represent the final product such as lighting, window furnishings, timber look garage door & timber windows. Facade details including entry door and window sizing may vary between house types. Pricing also excludes features such as fencing, landscaping, letterbox, decking, driveway and any notable features of the facade. Please speak with your sales consultant for further details.

LOT 4903, Armstrong Estate, Mount Duneed (400M2)

FLOOR PLAN: Cayenne 29_270
FACADE: Harvest

\$735,009

FIRST HOME OWNERS PRICE \$725,009

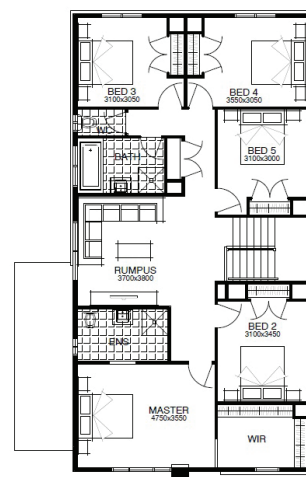
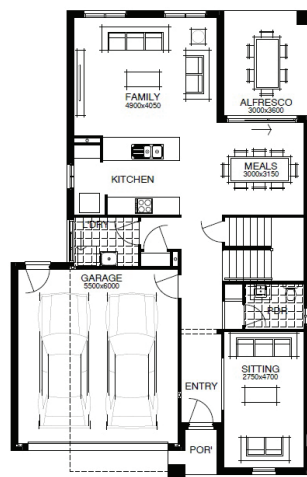
5 2 2 3 29sq

WELLNESS LIVES HERE
You should too.

*Terms & conditions apply, visit www.simonds.com.au/terms-and-conditions

PACKAGE INCLUSIONS:

- ▶ LIFETIME STRUCTURAL GUARANTEE
- ▶ DEVELOPER & COUNCIL REQs
- ▶ 450MM EAVES TO FACADE
- ▶ KEYED WINDOW LOCKS TO ALL OPENABLE WINDOWS
- ▶ 3 COAT PAINT APPLICATION
- ▶ SECTIONAL LIFT GARAGE DOOR
- ▶ TILED SHOWER BASE
- ▶ FINANCE SOLUTIONS AVAILABLE
- ▶ ... AND MUCH MORE!



For enquiries please contact:
James Hill
0458 588 078
simondsxpress.com.au

GEELONG VIC 3220
Geelong
james.hill@simonds.com.au

ARMSTRONG
BY SIMONDS

All Fixed Price Home and Land packages are subject to Developer and Council approval and is based on Simonds standard floor plan with preferred siting (without alterations). Package Price does not include stamp duty, government, legal or bank charges. Community Infrastructure Levy and Asset Protection Permit are not included in pricing and is to be arranged by the client directly with the Developer (if applicable). Any alterations may incur additional charges. Confirm land price and availability prior to purchase. Simonds reserves the right to withdraw or amend pricing, inclusions and promotion at any time without notice. Please refer to the terms and conditions at www.simonds.com.au/terms-and-conditions. This package applies to VIC Xpress range only. Please speak with your sales consultant for further details. Pricing is current at 14/01/2022.