



**RISE UPGRADES**  
**\$12,500\***

Plus  
**FLOORING PACK 'A'**

# HOME AND LAND

Images shown are for illustrative purposes only and may not represent the final product such as lighting, window furnishings, timber look garage door & timber windows. Facade details including entry door and window sizing may vary between house types. Pricing also excludes features such as fencing, landscaping, letterbox, decking, driveway and any notable features of the facade. Please speak with your sales consultant for further details.

LOT 6937, ARMSTRONG ESTATE, MOUNT DUNEED (334M2)

**FLOOR PLAN: EMERSON 17\_159**  
**FACADE: CLINTON**

3 2 2 1 17sq

**FIXED PRICE**  
**\$610,934**

FIRST HOME OWNERS PRICE \$600,934

**RISE**  
UPGRADES

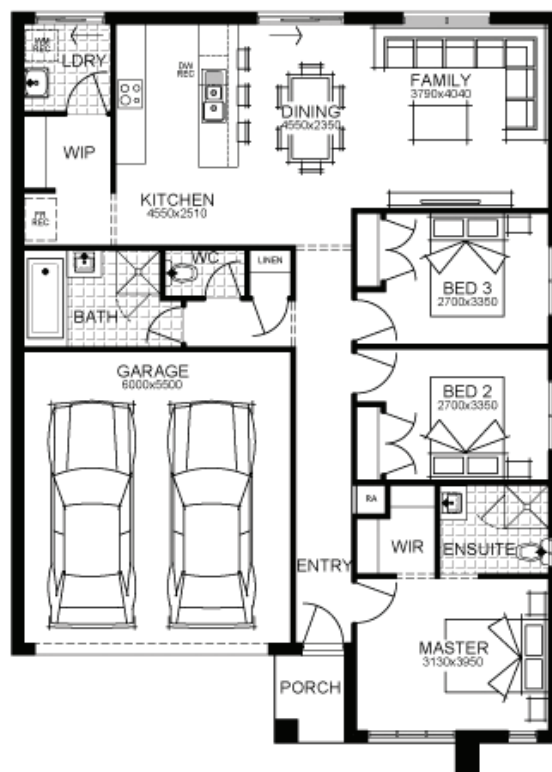
↑

**RISE ABOVE  
THE REST**

GET UP TO  
**\$44,000\***  
WORTH OF INCLUSIONS  
FOR JUST \$15,000\*

## PACKAGE INCLUSIONS:

- ▼ DEVELOPER & COUNCIL REQs
- ▼ FLOORING THROUGHOUT
- ▼ 20MM CAESARSTONE BENCHTOP TO KITCHEN
- ▼ OVERHEAD CUPBOARDS TO KITCHEN
- ▼ 20 LED DOWNLIGHTS
- ▼ BRICKWORK OVER WINDOWS
- ▼ 900MM APPLIANCES
- ▼ DISHWASHER
- ▼ TOWEL RAILS & TOILET ROLL HOLDERS
- ▼ REMOTE TO GARAGE DOOR



**For enquiries please contact:**  
Bruno Esposti  
0435219103  
[Simonds.com.au](http://Simonds.com.au)

Geelong  
GEELONG VIC 3220  
[bruno.esposti@simonds.com.au](mailto:bruno.esposti@simonds.com.au)

