



**dennis
family
homes**

a family building
homes for families™



HOUSE & LAND

\$945,490*

ARMSTRONG ESTATE – MOUNT DUNEED

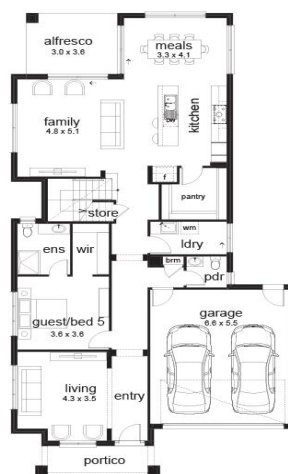
Lot 6812 Mystic Street
Mount Duneed VIC 3217

5 3 2 3 1

Patterson 363 Tempo Façade
(Inspirations Essence)

Home size: 36.71sq Land size: 400.00m²

- ✓ Inspirations Essence Inclusions
- ✓ Site Costs Allowance
- ✓ NBN/Opticomm/Redtrain/Multinet/CNT Corp. connection
- ✓ 2580mm ceiling height to ground floor
- ✓ Double Garage
- ✓ Sectional Garage Door
- ✓ Remote control to garage door
- ✓ Flyscreens
- ✓ Stainless Steel Appliances
- ✓ 900mm Technika appliance pack
- ✓ Technika dishwasher
- ✓ Gas ducted heating
- ✓ Evaporative cooling
- ✓ Floor Coverings
- ✓ Window Furnishings
- ✓ 35 m2 of Concrete Drive and Paving
- ✓ Current Promotion
- ✓ Bonus Security Alarm System



ARMSTRONG
MT DUNEED

Go to **dennisfamily.com.au** or call
1800 DENNIS for more information.

Paul Innes 0409 762 071

Reference HL0042691

*Subject to land and build contracts for specified lot, available until sold. 1. Images not to scale and may differ from final built forms. 2. Landscaping, driveway, retaining walls, paving, decking, fencing, decorator items and furnishings not included. 3. Unless stated, site costs are not fixed, package price may increase depending on: rock removal and services connection costs, retaining walls, tree root mitigation, developer requirements, BAL zoning and other statutory requirements. 4. "Fixed site costs" packages include rock removal and services connection only, exclude retaining walls and tree root mitigation. 5. Price based on facade shown, excludes stamp duty, legal and transaction costs eg FIRB, finance fees. 6. Customers required to enter into a separate land contract with the land developer. 7. Prospective buyers should make and rely on their own enquiries and seek independent legal and financial advice. 8. Package not available in conjunction with any other promotions. ©2019. Dennis Family Homes Pty Ltd ACN 056254249 is a registered building practitioner CDB-U 49195 (Vic) and 173511C (NSW).