



**dennis  
family  
homes**

a family building  
homes for families™



# HOUSE & LAND

# \$614,490\*

**ARMSTRONG ESTATE – MOUNT DUNEED**

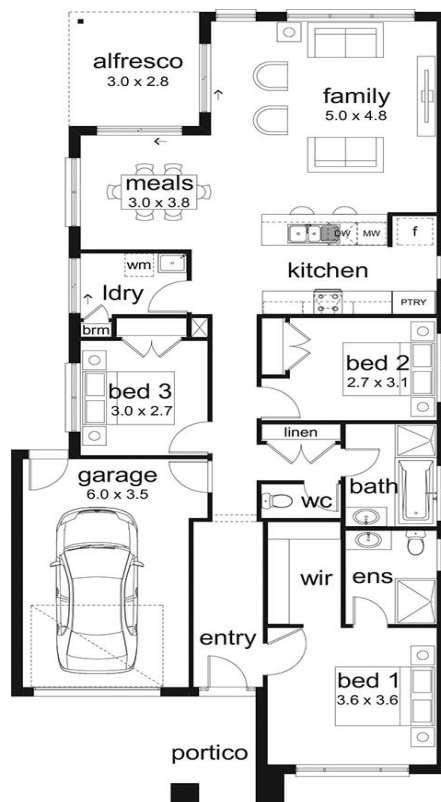
Lot 6816 Mystic Street  
Mount Duneed VIC 3217

3 2 1 1 1

**Crystal 18 Livia Façade**  
(Aspirations)

Home size: 17.90sq Land size: 294.00m<sup>2</sup>

- ✓ Aspirations Inclusions
- ✓ Site Costs Allowance
- ✓ Recycled water connection
- ✓ NBN/Opticomm/Redtrain/Multinet/CNT Corp. connection
- ✓ Sectional Garage Door
- ✓ Remote control to garage door
- ✓ Flyscreens
- ✓ Stainless Steel Appliances
- ✓ Technika dishwasher
- ✓ Gas ducted heating
- ✓ Floor Coverings
- ✓ 35 m2 of Concrete Drive and Paving
- ✓ Current Promotion



**ARMSTRONG**  
MT DUNEED

Go to **dennisfamily.com.au** or call  
**1800 DENNIS** for more information.

Paul Innes 0409 762 071

Reference HL0043235



Schedule A Meeting

\*Subject to land and build contracts for specified lot, available until sold. 1. Images not to scale and may differ from final built forms. 2. Landscaping, driveway, retaining walls, paving, decking, fencing, decorator items and furnishings not included. 3. Unless stated, site costs are not fixed, package price may increase depending on: rock removal and services connection costs, retaining walls, tree root mitigation, developer requirements, BAL zoning and other statutory requirements. 4. "Fixed site costs" packages include rock removal and services connection only, exclude retaining walls and tree root mitigation. 5. Price based on facade shown, excludes stamp duty, legal and transaction costs eg FIRB, finance fees. 6. Customers required to enter into a separate land contract with the land developer. 7. Prospective buyers should make and rely on their own enquiries and seek independent legal and financial advice. 8. Package not available in conjunction with any other promotions. © 2019. Dennis Family Homes Pty Ltd ACN 056254249 is a registered building practitioner CDB-U 49195 (Vic) and 173511C (NSW).