

SOHO
LIVING

HOUSE & LAND PACKAGE



CREMORNE

3 2 2

FIXED PRICE

\$623,000

6927 COMPANION STREET, MOUNT DUNEED
ARMSTRONG

HOME SIZE 16SQ

LAND SIZE 293m²

- Architectural façade
- 2590mm High Ceilings
- 20mm stone benchtop to kitchen
- Timber laminate flooring to living areas
- Quality carpet to bedrooms
- Splashback to Kitchen
- LED downlights

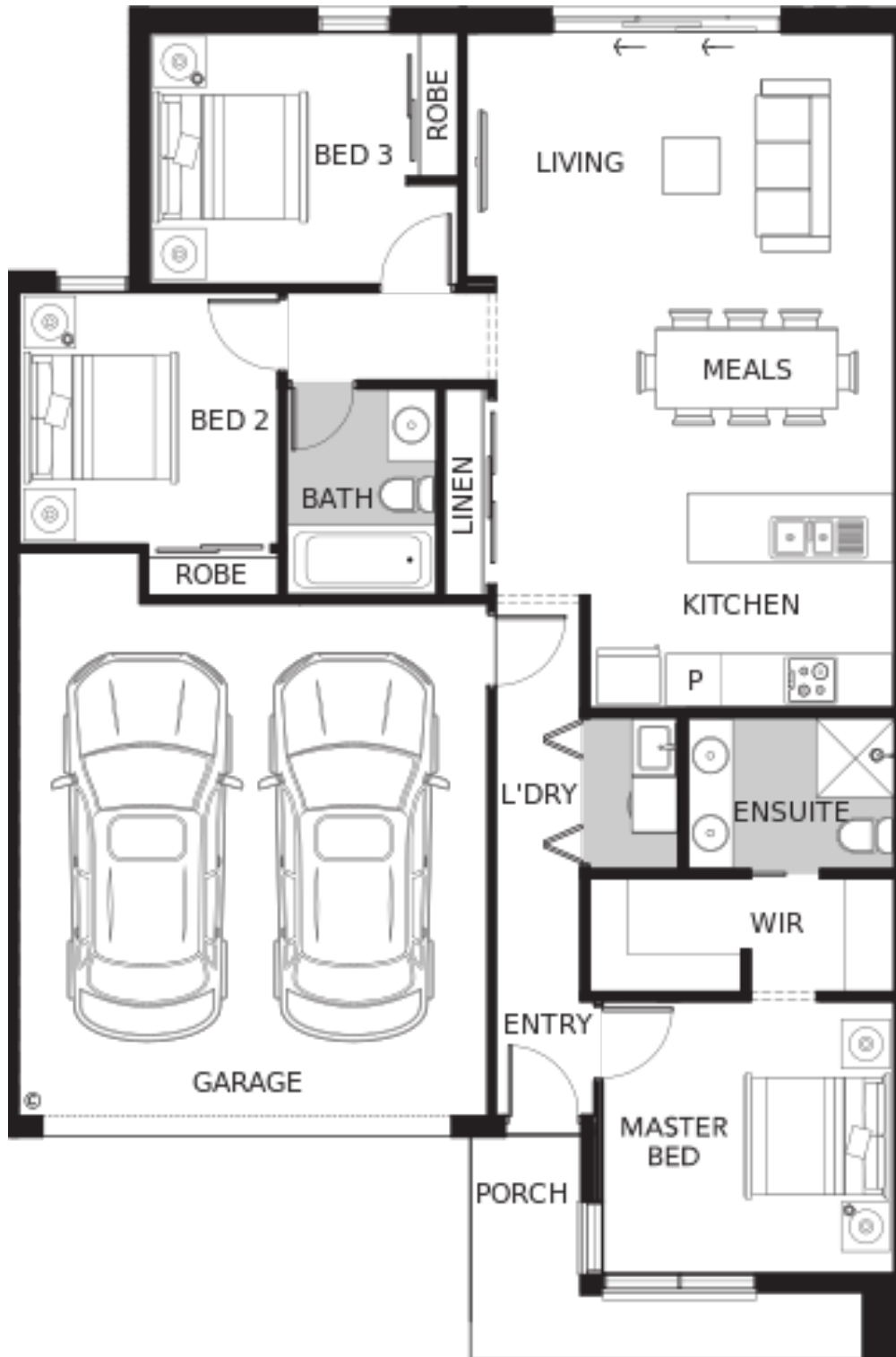


KELSEY HUTCHESSON | 0448 095 870 | KELSEYH@SOHOLIVING.COM.AU

SOHOLIVING.COM.AU

\$623,000

6927 COMPANION STREET, MOUNT DUNEED
ARMSTRONG



Whilst care has been taken in the preparation of this flyer, the particulars are not to be construed as containing any representation of the facts upon which any interested party is entitled to rely. This flyer is intended to provide general information only and does not constitute an offer to supply. All photographs, plans, maps and drawings are illustrative only and may not be to scale. Lot layout, lot size dimensions, easements, landscape treatments and final road layout are subject to change and conditional on authority approval. All interested parties should make their own enquires. Information contained is correct at the time of printing. * Source: Victorian Planning Authority | CDB-U 50036