

# SOHO

LIVING

## TOWNHOME

BOSTON D | LOT 3528 | ARMSTRONG

 3  2  1

FIXED PRICE

# \$581,800

LOT 3528 VOYAGE STREET, MOUNT DUNEED  
ARMSTRONG

**HOME SIZE** 18SQ  
**LAND SIZE** 147m<sup>2</sup>



### SOHO LIVING TURNKEY INCLUSIONS

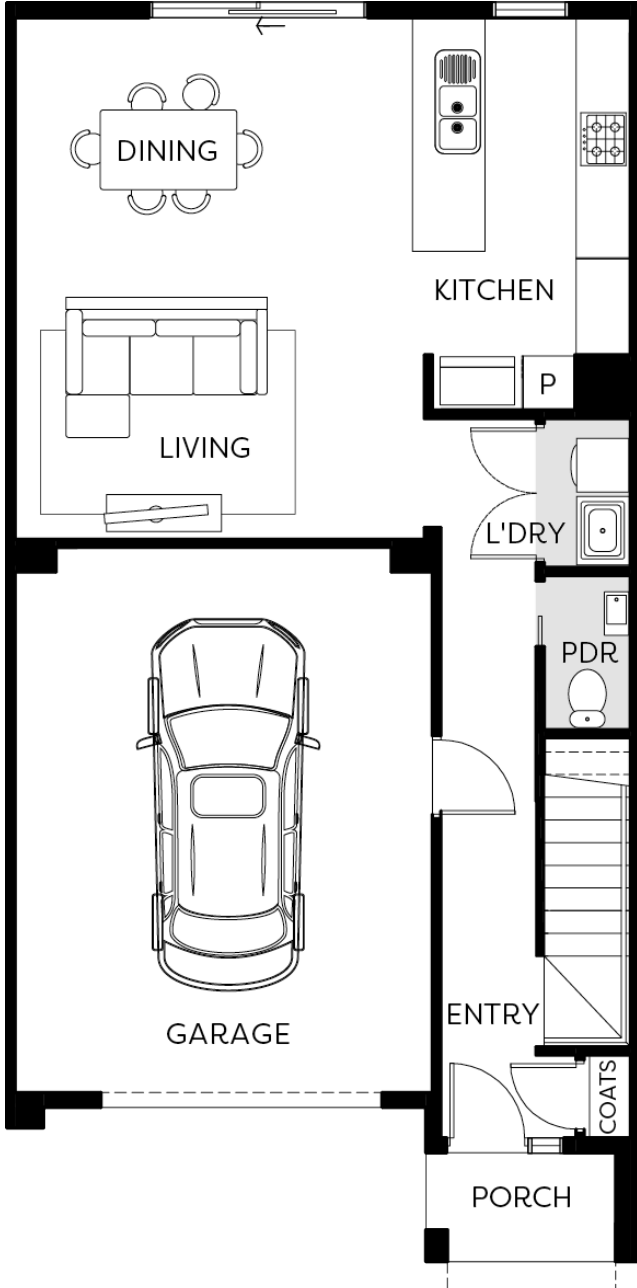
- Architectural façade
- 2590mm Ceiling heights to ground floor
- 20mm Stone benchtops including waterfalls (*Design specific*)
- 20mm stone benchtop to ensuite and bathroom
- Fisher & Paykel Kitchen appliances including dishwasher
- Mirrored splashback to kitchen
- Coloured concrete driveway and front path
- Flooring timber laminate and carpet
- Tiled shower bases
- Colorbond sectional garage door with duel remotes
- Ensuite, bathroom and toilet accessories
- Sliding robe doors
- Landscaping to front and rear including letterbox, clothesline and fencing

13 SOHO | SALES@SOHOLIVING.COM.AU

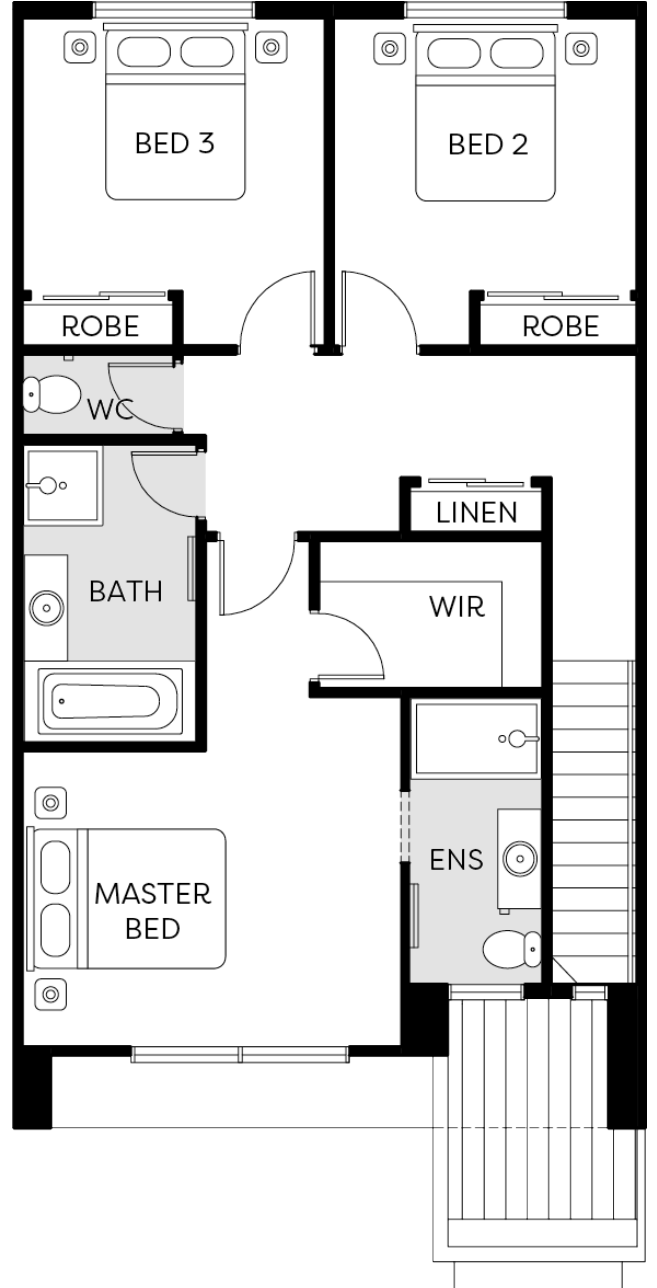
SOHOLIVING.COM.AU

# \$581,800

LOT 3528 VOYAGE STREET, MOUNT DUNEED  
ARMSTRONG



GROUND FLOOR



FIRST FLOOR

Whilst care has been taken in the preparation of this flyer, the particulars are not to be construed as containing any representation of the facts upon which any interested party is entitled to rely. This flyer is intended to provide general information only and does not constitute an offer to supply. All photographs, plans, maps and drawings are illustrative only and may not be to scale. Lot layout, lot size dimensions, easements, landscape treatments and final road layout are subject to change and conditional on authority approval. All interested parties should make their own enquires. Information contained is correct at the time of printing. \* Source: Victorian Planning Authority | CDB-U 50036