



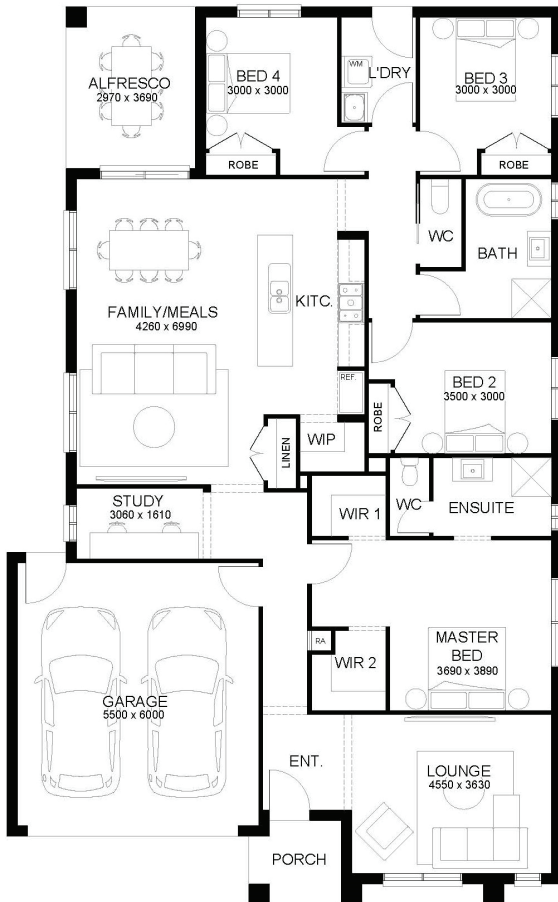
SUITS 14.0M+ BLOCK

HOUSE &amp; LAND PACKAGE

**\$753,277\***

Lot 5317 Armstrong Mt Duneed, MOUNT

4 2 2 2

**NEWBURY 232****ARMSTRONG**  
MT DUNEED

LOT SIZE 448 sqm

HOUSE AREA 232.08 sqm

**Inclusions**

- Site Costs Including Rock Removal
- Council & Developer Requirements
- Floor Coverings Throughout
- Brickwork Above All Elevations Including Windows, External Doors & Over Garage With Face Brick
- 2590mm Ceilings To Single Storey & Ground Floor In Double Storey Homes
- 40mm Stone Benchtops To Kitchen & 20mm To Bathroom & Ensuite
- 900mm Appliances, Dishwasher & Microwave With Trim Kit
- LED Lights Throughout
- Blinds Throughout
- Evaporative Cooling
- 2 Pot Drawers To Kitchen With Soft Closers
- NBN Network

**For more information contact  
Shubham Singla on 0433 677 845**

\*Fixed Price Current As Of 24/05/2024. Fixed Pricing Is Based On Developer Engineering Plans, Estate Guidelines And Plan Of Subdivision. Land Availability And Pricing Supplied By The Developer Are Subject To Change Without Notice. All House And Land Packages Are Subject To Developer Approval. Price Does Not Include Any Stamp Duty, Government, Legal Or Bank Charges. \*Total Package Price Minus \$10K FHOG (Subject To SRO Eligibility) The First Home Owners Grant Is A Government Incentive And Any Claims Will Be Lodged Externally. Photographs In This Flyer May Depict Fixtures, Finishes And Features Either Not Supplied Or Are Upgrade Options By Sherridon. All Floorplan, Facade Images And Photographs Have Been Used For Illustrative Purposes Only (Refer To Contract Documentation For Full Details) And May Not Represent The Final Product As Shown. Please Refer To Your Friendly New Home Consultant For An Exact List Of Inclusions With Detail. Sherridon Homes Reserves The Right To Amend Specification And Price Without Notice. VIC Builder's Licence: CDB-U 50039v

Call **1300 188 668** or visit **sherridonhomes.com.au**

Sherridon Pty Ltd | 56 Barclay Road, Derrimut, Victoria 3026 | P +61 3 8390 5000 | E info@sherridonhomes.com.au | Registered Building Practitioner CDB-U50039