



Artist Impression

LOT 3607 Jubilee Estate, Wyndham Vale

From \$521,820*

FHB from \$511,820*



Chelsea 4

TOWNLIVING **m**
metricon

LAND AREA 170m²

INCLUSIONS

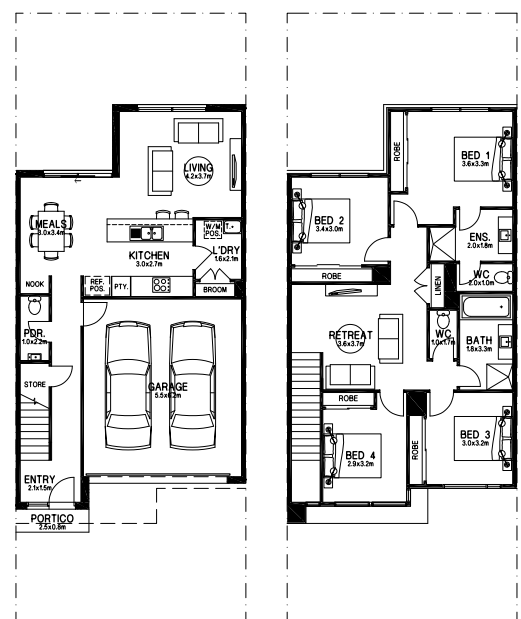
- Fixed site costs (no more to pay)
- Landscaping to front yard
- 2550mm ceiling height to main living level
- Fencing
- Modern kitchen cooktop, oven and rangehood
- Three coat paint system
- Timber look laminate flooring to living, main and kitchen
- Coloured pathways
- Carpet to bedrooms
- Letterbox
- Ducted heating
- Stone benchtop to kitchen
- Air Conditioning (split system) to Main Living area
- LED lighting

CONTACT

Madyen Abdou Estate Manager
P: (03) 9684 8185 E: m.abdou@oliverhume.com.au

Jubilee Sales & Information Centre
39 Memory Crescent,
Wyndham Vale VIC 3024

Opening Hours
11am - 5pm



Ground Floor

First Floor

Note: Orientation will change depending on lot selected.

* Price based on standard floor plan and facade. Image depicts upgrade items not included in the price. *Price is inclusive of first home buyer grant for eligible buyers.

Jubilee

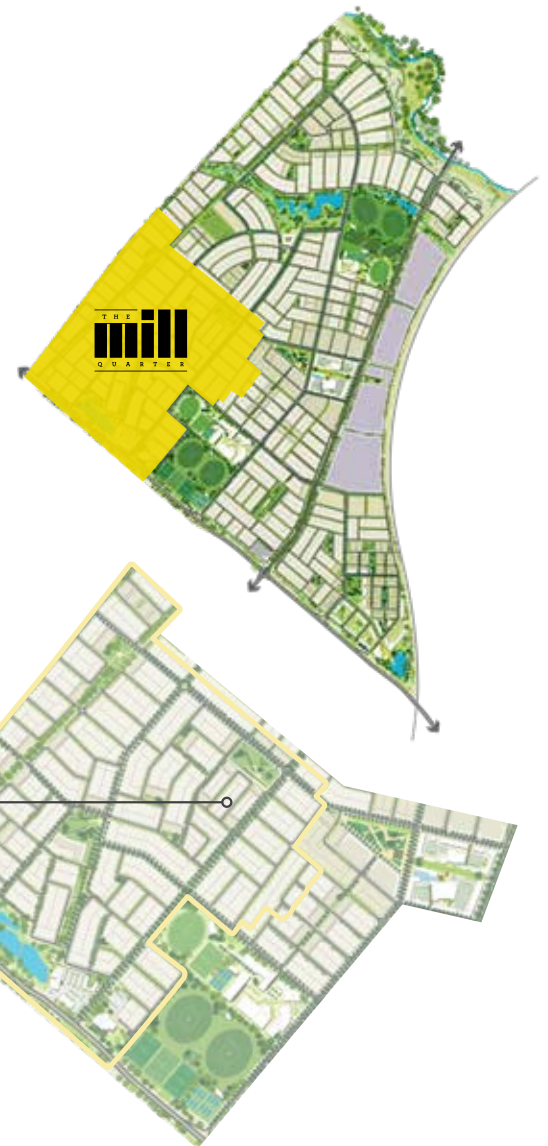
TOWNHOMES

THE CALCOTT COLLECTION



EXCLUSIVE LIFESTYLE

Located in the heart of The Mill Quarter, take full advantage of these innovative yet entirely functional designed Jubilee Townhomes from TownLiving by Metricon close to a myriad of lifestyle amenities within Jubilee. You can simply relax and look forward to the moment you can move straight in and embrace this exclusive lifestyle.



*Townhome prices are based on specified floorplan and façade. Townhome Packages valid until sold out. Plans correct at time of printing and subject to change without notice. Floorplans are a representation of specified facade unless otherwise stated. Metricon reserves the right to alter the images or descriptions without notice. Land supplied by Lotus Living. Land prices and availability are subject to change without notice. All homes are subject to developer approval. Landscaping and fencing may differ from that shown. Total squares and building size of the home is calculated by measuring from the external side of external walls. Where no external wall exists for the purpose of measuring building area (such as porticos, balconies or outdoor rooms), Metricon assumes a straight line between the exterior of walls or columns. VIC Builder's Licence CDB-U 52967.