

**SIMONDS**  
BUILDING HOMES SINCE 1949



**ELEVATE**  
UPGRADES

UP TO  
**\$39,100\***  
WORTH OF INCLUSIONS  
FOR JUST **\$5,000\***

# HOME AND LAND

Images shown are for illustrative purposes only and may not represent the final product such as lighting, window furnishings, timber look garage door & timber windows. Facade details including entry door and window sizing may vary between house types. Pricing also excludes features such as fencing, landscaping, letterbox, decking, driveway and any notable features of the facade. Please speak with your sales consultant for further details.

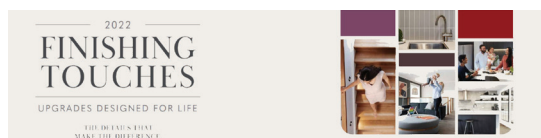
LOT 5402, JUBILEE ESTATE, WYNDHAM VALE (262M2)

**FLOOR PLAN: TARCOOLA 15\_146**  
**FACADE: SWAN**

**FROM\***  
**\$579,310**

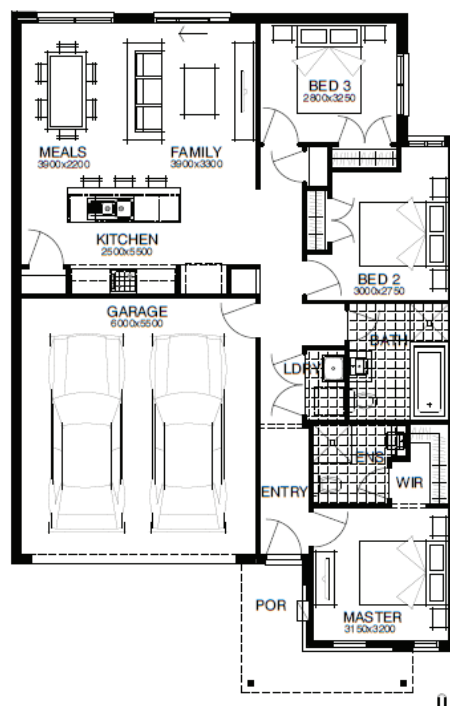
FIRST HOME OWNERS PRICE \$569,310

3 🚗 2 🚿 2 🚗 1 🚗 15sq 📏



## PACKAGE INCLUSIONS:

- ▼ DEVELOPER & COUNCIL REQs
- ▼ FLOORING THROUGHOUT
- ▼ 20MM CAESARSTONE BENCHTOP TO KITCHEN
- ▼ OVERHEAD CUPBOARDS TO KITCHEN
- ▼ 20 DOWNLIGHTS
- ▼ BRICKWORK OVER WINDOWS
- ▼ COLOURED CONCRETE DRIVEWAY UP TO 40M2
- ▼ REMOTE TO GARAGE DOOR
- ▼ NBN PROVISIONS (EXCLUDES HUB)
- ▼ TOWEL RAILS & TOILET ROLL HOLDERS



**For enquiries please contact:**

Viola Vito  
0423518385  
[Simonds.com.au](mailto:Simonds.com.au)

Metro West

VIC  
[viola.vito@simonds.com.au](mailto:viola.vito@simonds.com.au)

**Jubilee**

\*From pricing is based on standard plan, builders preferred siting, site costs allowance, and is subject to extreme site changes beyond our reasonable control and unknown at the time of print. All packages are subject to Developer and Council approval. Package Price does not include stamp duty, government, legal or bank charges. Community Infrastructure Levy and Asset Protection Permit are not included in pricing and is to be arranged by the client directly with the Developer (if applicable). Any alterations may incur additional charges. Confirm land price and availability prior to purchase. Simonds reserves the right to withdraw or amend pricing, inclusions and promotion at any time without notice. \*Please refer to the terms and conditions at [www.simonds.com.au/terms-and-conditions](http://www.simonds.com.au/terms-and-conditions). This package applies to VIC New Living Small Lot range only. Please speak with your sales consultant for further details. Pricing is current at 31/07/2022.