

SIMONDS
BUILDING HOMES SINCE 1949



\$7,000

GALLERY
VOUCHER

VILLAWOOD PAYS YOUR
**BUILDER
DEPOSIT**
UP TO
\$25K*
Get into your new home faster!

HOME AND LAND

Images shown are for illustrative purposes only and may not represent the final product such as lighting, window furnishings, timber look garage door & timber windows. Façade details including entry door and window sizing may vary between house types. Pricing also excludes features such as fencing, landscaping, letterbox, decking, driveway and any notable features of the façade. Please speak with your sales consultant for further details.

LOT 635, AQUAREVO ESTATE, LYNDHURST (512M2)

FLOOR PLAN: HILLSBOROUGH
22_208
FACADE: MACKAY

FIXED PRICE

\$730,801

FIRST HOME OWNERS PRICE \$720,801

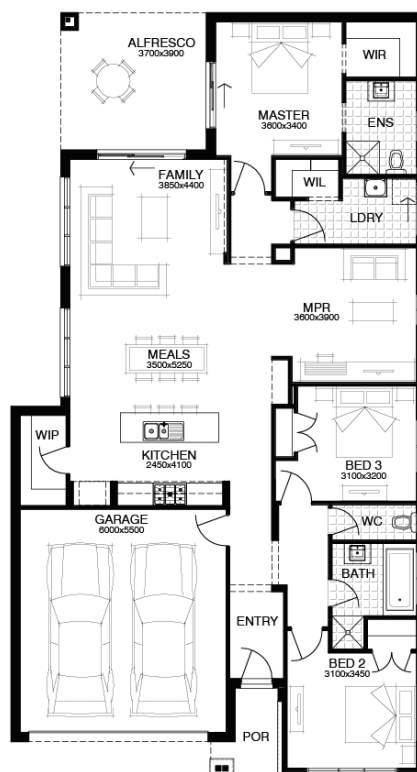
BIRTHDAY BONUS*

\$19k of options for \$0

PACKAGE INCLUSIONS:

- ▼ \$19,000 OF FREE UPGRADES
- ▼ DEVELOPER AND COUNCIL REQUIREMENTS
- ▼ UP TO 100M2 (SINGLE STOREY) CAT 1 OR 180M2 (DOUBLE STOREY) CAT 2 CARPET
- ▼ UP TO 50M2 TIMBER FLOORING LAMINATE
- ▼ UP TO 40M2 OF 100MM COLOURED THROUGH CONCRETE
- ▼ REMOTE CONTROL TO GARAGE DOOR
- ▼ SECTIONAL LIFT GARAGE DOOR
- ▼ 20MM CAESARSTONE BENCH TOP TO KITCHEN

3 🚗 2 🍷 2 🚗 2 🚗 22sq 📏



For enquiries please contact:

Ainsley Wastenev
0402 353 591
Simonds.com.au

Metro East

VIC
ainsley.wastenev@simonds.com.au

AQUAREVO
LYNDHURST

All Fixed Price Home and Land packages are subject to Developer and Council approval and is based on Simonds standard floor plan with preferred siting (without alterations). Package Price does not include stamp duty, government, legal or bank charges. Community Infrastructure Levy and Asset Protection Permit are not included in pricing and is to be arranged by the client directly with the Developer (if applicable). Any alterations may incur additional charges. Confirm land price and availability prior to purchase. Simonds reserves the right to withdraw or amend pricing, inclusions and promotion at any time without notice. Please refer to the terms and conditions at www.simonds.com.au/terms-and-conditions. This package applies to VIC Range range only. Please speak with your sales consultant for further details. Pricing is current at 04/11/2019.