

# Home & Land Package

# ARDEN



4 2 2

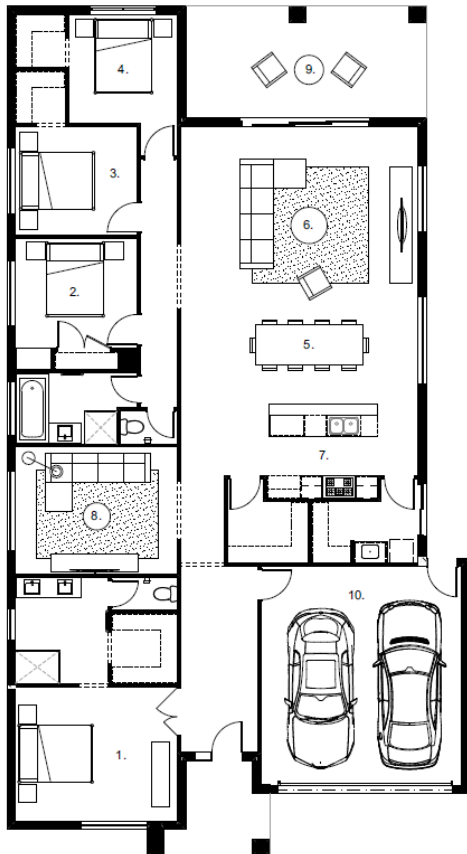
## BELLINI 29MK2

**LOT 802 (449 m2)**

**SUSTAIN CIRCUIT, AQUAREVO ESTATE, LYNDBURST**

**BUYER'S PRICE:**

**\$749,900\***



- Fixed site costs
- All estate requirements included
- 20mm Caesarstone® benchtops, 40mm edge to kitchen island Caesarstone® benchtop, Caesarstone® waterfall end panels and Franke double bowl undermount sink.
- Fisher & Paykel appliance package including integrated French door refrigerator/freezer, dishwasher, oven, cooktop and rangehood.
- Floor coverings
- 2590mm ceiling height to ground floor and 2440mm to first floor
- Lumina range inclusions
- Colourbond roof, fascia gutters and downpipes
- Light-filled Interiors

### CONTACT

- Gina Granger
- 0488 070 944

**ardenhomes.com.au**

Pricing based on Developer supplied engineering plans and plan of subdivision and Arden Homes standard floor plan with pre-determined façade and preferred siting (w/o alterations, alterations may incur additional charges). Subject to developer and council approval. Package price does not include stamp duty, government, legal or bank charges. Pricing includes FHOG and is subject to SRO criteria. \$10,000 cash back offer available on Escape range home and land packages only. Arden Homes reserves the right to withdraw or amend pricing, inclusions and promotion without notice. Speak to us for more information. (CDB-U 48276). ©2020 Arden Homes