



Price excludes: Fencing, Landscaping, Concrete pavers, Planter boxes, Decking

## \$646,500\*

LOT 1701 PEACEFUL  
CRESCENT  
IMAGINE ESTATE  
STRATHFIELDSAYE

AMIRA 22A  
YALE FACADE

BLOCK SIZE | 455M<sup>2</sup>



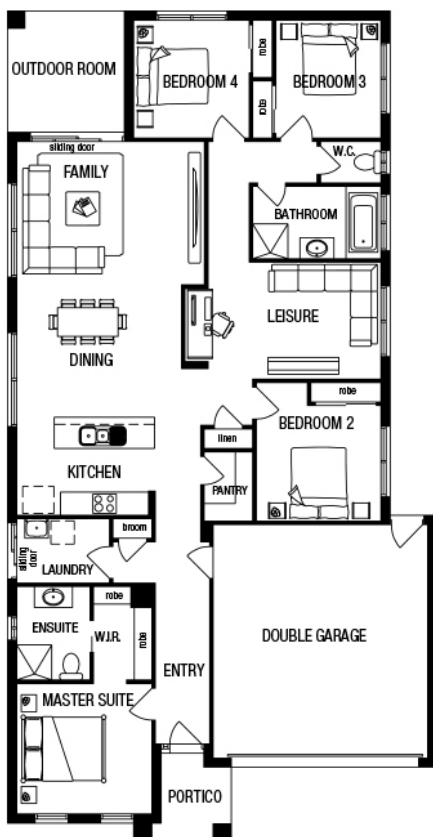
4



2



2



### PACKAGE INCLUDES:

THE AMIRA 22A WITH YALE FACADE  
BUILT TO OUR INDUSTRY LEADING  
BASE SPECIFICATIONS AND LAND,  
PLUS:

- ✓ Lifetime structural guarantee#
- ✓ 20mm stone benchtop to Kitchen
- ✓ Large 900mm wide stainless steel appliances
- ✓ 2550mm high ceilings
- ✓ Remote control garage door
- ✓ BAL 12.5 requirements^
- ✓ Fibre optic package
- ✓ Evaporative Cooling
- ✓ Laminate timber flooring to entry, dining, kitchen & family areas^
- ✓ Carpet to all remaining areas (excluding wet areas)^
- ✓ Concrete driveway (up to 35m<sup>2</sup>)
- ✓ Soft close pot drawers
- ✓ Downlights throughout living areas
- ✓ Stunning Facade included
- ✓ Site Cost Contribution



**1300 METRICON** |  
[www.metricon.com.au](http://www.metricon.com.au)

**FREEDOM**

**m**  
metricon

\*Home and Land Package price correct at time of printing and subject to change without notice. Package price excludes external lighting, telephone service, customer account opening fees, stamp duty on land, legal fees and conveyancing costs including titles and property report. See your Metricon new home advisor for full details of standard inclusions. Land supplied by developer. Land prices and availability are subject to change without notice. All home & land packages are subject to developer approval. #For details on our Lifetime structural guarantee visit [metricon.com.au/terms/structuralguarantee](http://metricon.com.au/terms/structuralguarantee). Newfield Real Estate Pty Ltd ACN 159 312 722, Licence number 028051L. VIC Builder's Licence: CDB-U 52967 +Typical site cost allowance included in the price. Additional site costs may apply if site survey and soil tests indicate the presence of fill or more than 300mm of land fall or presence of rock above the typical site allowance made. Package Printed Date: 24/08/2023 Price Region: Bendigo