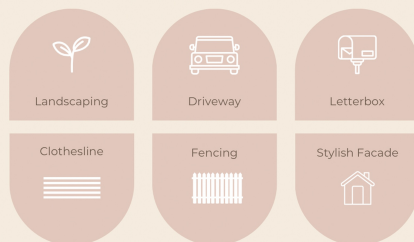




### INTERNAL Turnkey Inclusions



### EXTERNAL Turnkey Inclusions



**For Sale**



Lot 1604 Duke Lane, Strathfieldsaye

**FULL TURNKEY INCLUSIONS, MOVE IN WITH NOTHING MORE TO DO.**

This Turnkey package includes:

- All site costs are fixed up front into the price.
- Landscaping to front: Includes a dripper irrigation system with a battery-operated timer.
- Rear landscaping: Includes mulched garden beds, turf, topping, and dripper system.
- Fencing: Full share fencing to sides and rear boundaries, side gate.
- Coloured concrete driveway.
- Fold away clothesline with a coloured concrete pad.
- Concrete letterbox to suit house type and meet estate design guidelines.
- Timber laminate flooring, carpet, and tiles to wet areas.

**For Sale: \$715,899 Turnkey Fixed Price Build - No Surprises**

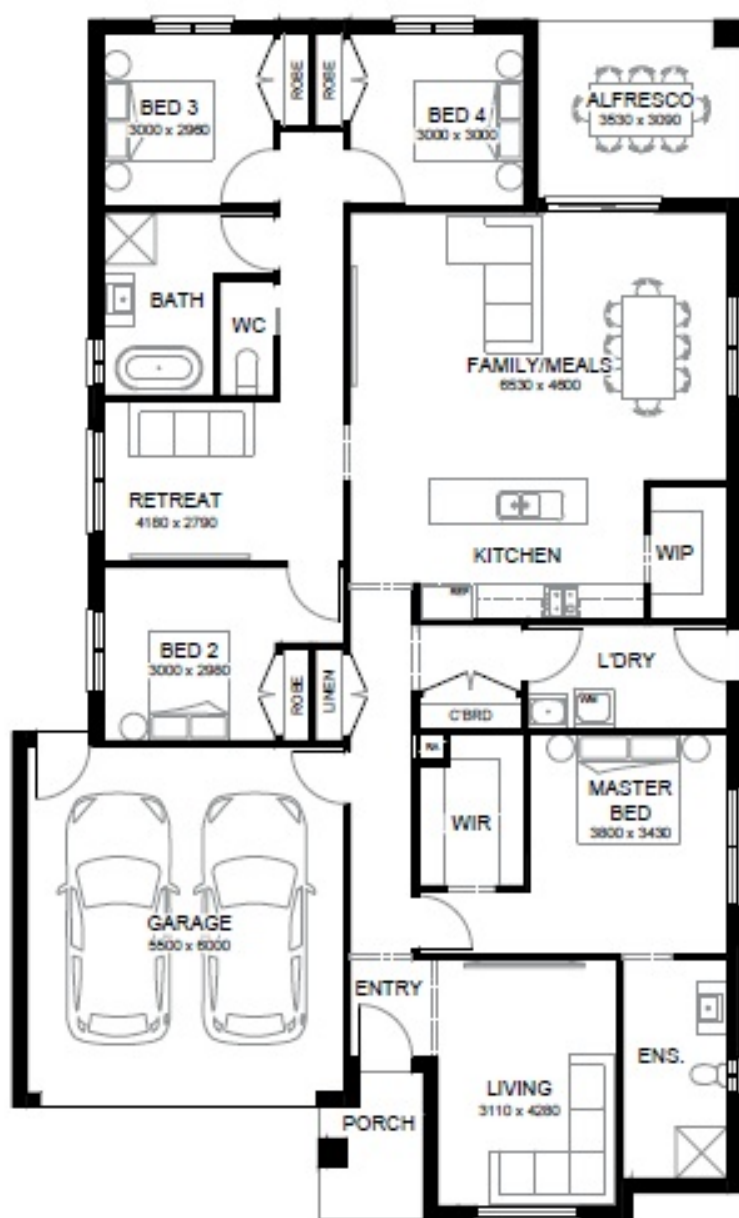


Sasha Bursac  
0492901154  
sasha@tkbg.com.au

Heating and Cooling  
www.turnkeybuildinggroup.com.au  
info@tkbg.com.au



**1300 008 524**



## FREEMONT 234



MINIMUM LOT WIDTH	14.00m
MINIMUM LOT DEPTH	28.00m
HOME WIDTH	12.60m
HOME LENGTH	20.30m

Ground floor	182.82m <sup>2</sup>	19.68sq
Garage	36.28m <sup>2</sup>	3.91sq
Porch	4.26m <sup>2</sup>	0.46sq
Alfresco	10.91m <sup>2</sup>	1.17sq
<b>TOTAL</b>	<b>234.27m<sup>2</sup></b>	<b>25.22sq</b>