

PORTER DAVIS

# REAL ESTATE

NEW HOME LIVING MADE EASY

**5%**  
DEPOSIT#

**90**  
DAYS\*  
READY TO  
MOVE IN

Photo for illustration purposes only.

Complete price

**\$589,900**

First Home Buyers pay just

**\$579,900**

**Move In**

September 2019



Photo for illustration purposes only.

**Lot 1614 Shulze Drive**

CLYDE NORTH

350m<sup>2</sup>

**Kennedy 20** (21.99 sq)

4  2  2 

**Why buy a Porter Davis  
Real Estate home?**

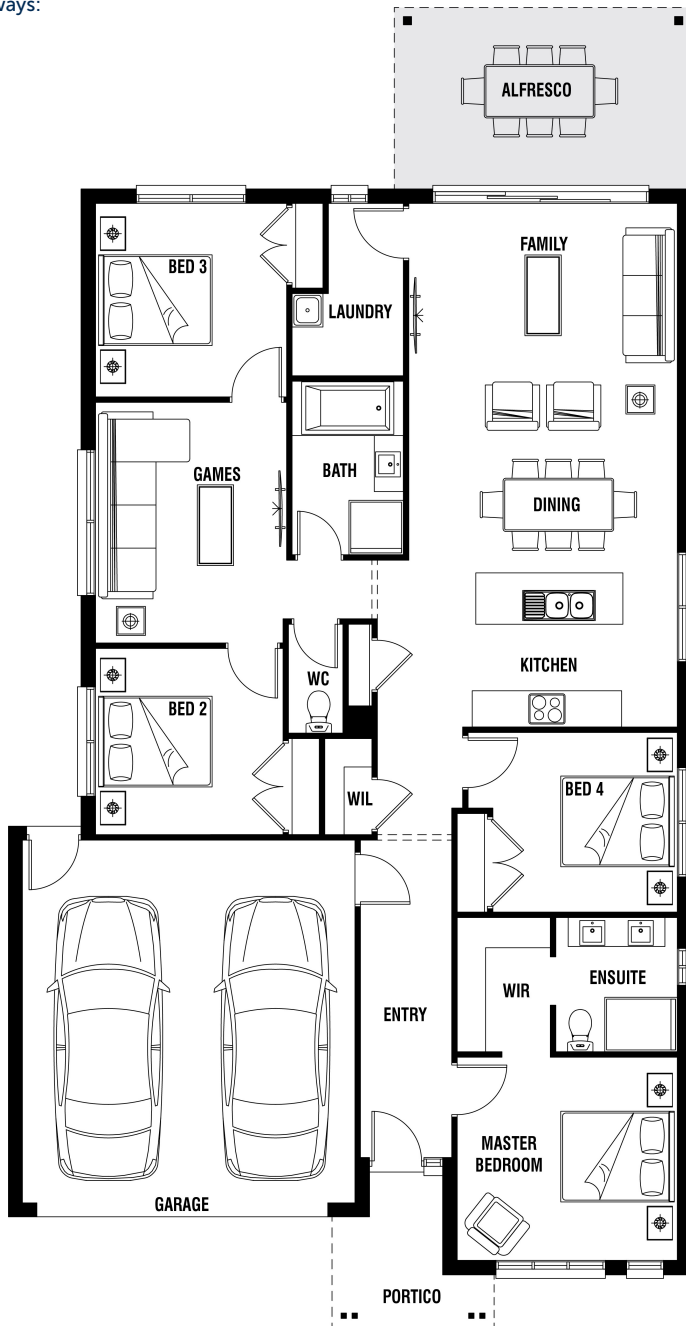
- 5% deposit. Balance at settlement
- No progress payments
- Stamp Duty savings<sup>2</sup>
- Contracts ready to sign so you can move in sooner
- No obligation professional finance advice

PORTER DAVIS  
REAL ESTATE

## Kennedy 20 (21.99 sq)

Lot 1614 Shulze Drive  
CLYDE NORTH

Melways:



## LUXURY TURN-KEY INCLUSIONS AT NO EXTRA COST

- KITCHEN
  - 20mm Silestone kitchen benchtop
  - Technika stainless steel 5 burner cooktop
  - Technika dishwasher and rangehood
  - Tiled splashback
- INTERIOR
  - Floor coverings to entire house
  - 20mm thick Silestone vanity top to ensuite and bathroom
  - 2590mm (8ft 6) high ceilings
  - 3 coat paint system
- EXTERIOR
  - Landscaping to front of block
  - Coloured concrete driveway and path to door
  - Letterbox
  - Remote controlled garage door with two transmitters
- EXTRAS
  - 7 year structural warranty
  - Full termite protection
  - Colour schemes chosen by industry leading interior designers.
- Plus much more!